

cardioid dynamic microphones

D-190ES with built-in on-off switch



D-190E/D-190ES

DESCRIPTION

AKG D-190E Series. These microphones are based on a cardioid dynamic transducer which distinguishes itself by a smooth, wide range response with exceptional front-to-back discrimination at all frequencies. These features ensure clear and effortless sound transmission without feedback, as well as exceptionally good recordings even under acoustically unfavorable conditions. An integral sintered bronze cap eliminates the disturbing effects of breath noise and air turbulence and also protects the microphone system from dust, iron particles and moisture.

D-190TS is delivered with MC-20TS cable assembly for High impedance operation with on-off switch.

D-590



The D-590 is similar in performance characteristics to the D-190 except that the low end of the response range has been attenuated to defeat low frequency oscillation and table-born noise when mounted directly on surfaces. The unit comes equipped with a 9³/₄" long, non-detachable, flexible shaft plus mounting hardware and cable.

D-200E



Based on the revolutionary "Two-Way" concept (See page 13) this is truly a superb cardioid dynamic microphone. Objective, faithful reproduction of sound, without off-axis discoloration, is obtained with the D-200E. In public address systems it permits control of feedback and offers almost complete freedom of microphone and speaker placement. Smooth, full range response, linear off-axis acceptance and total lack of proximity effect are the main characteristics of the D-200.

D-200TS is delivered with MC-20TS cable assembly for High impedance operations with on-off switch.

D-707E



The 707E is a multi-purpose quality microphone with professional performance characteristics and is suitable for recordings and public address applications. It is particularly capable of handling high sound pressure levels without overload or distortion. It features an integral windscreen, rugged construction and is resistant to rough handling.

D-707TS is delivered with MC-20TS cable assembly for High impedance operation with on-off switch.

D-1000E



The D-1000E has been developed for the performing artist, record, broadcast and public address system applications. It features a mode selection switch to shape the microphones response characteristics.

B=Bass: Emphasizes smooth low frequency response.

M=Medium: Attenuated bass; emphasizes middles and highs for greater working distance.

S=Sharp: Added upper mid-range brilliance and presence.

D-1000TS is being delivered with MC-20TS cable assembly for High impedance operation with on-off switch.

technical data

SPECIFICATIONS

Sensitivity: -53 dB (re 1 mw/10 dynes/cm²)

Impedance: D-190E, D-190ES = 200 ohm

D-190TS = High Z

Dimensions: 6¹/₄" lg x 1¹/₂" dia.

Weight: 6 oz.

ACCESSORIES

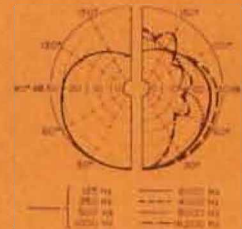
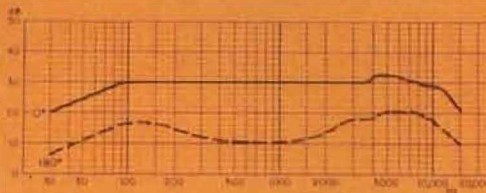
W-8 Windscreen

H-24 Suspension

MSH-58E Flexible Shaft

SA-11/1 Stand Adapter (Replacement)

AKG Stands



Sensitivity: -52 dB (re 1 mw/10 dynes/cm²)

Impedance: 200 ohms

Dimensions: 11¹/₈" lg x 1⁵/₈" dia.

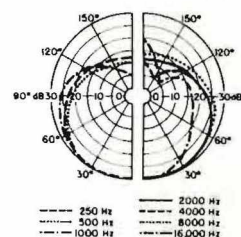
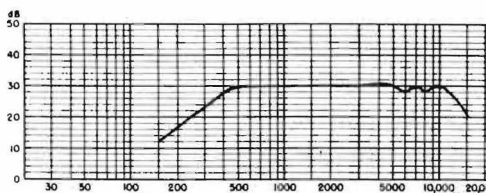
Weight: 9 oz.

W-8 Windscreen

ST-4A Table stand, weighted

ST-41 Same as above but with one push button.

ST-43 With three push buttons.



Sensitivity: -55 dB (re 1 mw/10 dynes/cm²)

Impedance: D-200E = 200 ohm

D-200TS = High Z

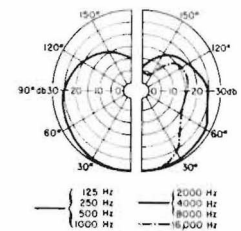
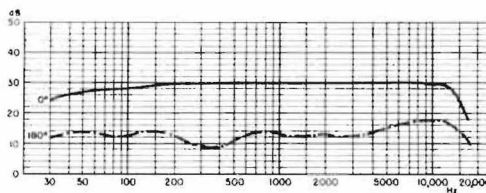
Dimensions: 7-5/16" lg x 1⁵/₈" dia.

W-4 Windscreen

MSH-58E Flexible Shaft

SA-20/1 Stand Adapter (Replacement)

AKG Stands



Sensitivity: -52 dB (re 1 mw/10 dynes/cm²)

Impedance: D-707E = 200 ohms

D-707TS = Hi Z

Dimension: 6" lg x 7/16" dia.

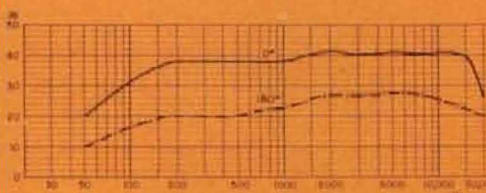
Weight: 5.7 oz.

H-24 Suspension

MSH-58E Flexible Shaft

SA-11/1 Stand adapter (Replacement)

AKG Stands



Sensitivity: -53 dB (re 1 mw/10 dynes/cm²)

Impedance: D-1000E = 200 ohm

D-1000TS = High Z

Dimension: 6" lg x 1-7/16" dia.

Weight: 9¹/₂ oz.

MSH-58E Flexible Shaft

W-4 Windscreen

SA-12/1 Stand Adapter (Replacement)

AKG Stands

