

NEODYMIUM SERIES

KAPPALITE™ 30 15LF

Recommended for professional audio and bass in vented enclosures.

- 900 W Program Power
- 15" Nominal Diameter
- 8 or 4 Ω

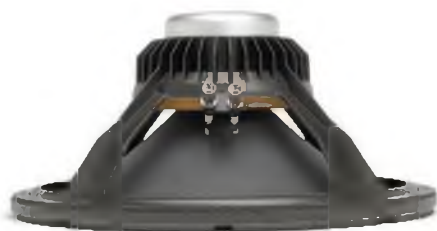
APPLICATION		ENCLOSURE	
Midrange	<input type="checkbox"/>	Sealed Box	<input type="checkbox"/>
Midbass	<input type="checkbox"/>	Vented Box	<input checked="" type="checkbox"/>
Woofer	<input checked="" type="checkbox"/>	Scoop Loading	<input type="checkbox"/>
Subwoofer	<input checked="" type="checkbox"/>	Horn Loading	<input checked="" type="checkbox"/>
Bass Guitar	<input checked="" type="checkbox"/>		

SPECIFICATION

Nominal Basket Diameter	15", 381 mm
Nominal Impedance*	8 Ω
Power Rating*	
Program Power	900 W
Nominal Power	450 W
Resonance	44 Hz
Usable Frequency Range	40 Hz – 1.5 kHz
Sensitivity*	98.4 dB
Magnet Weight	11 oz.
Gap Height	0.365", 9.3 mm
Voice Coil Diameter	3", 76 mm

MATERIALS OF CONSTRUCTION

Copper voice coil
Kapton former
Neodymium magnet
Vented core
Die-cast aluminum basket/heatsink
Treated paper cone
Cloth cone edge
Treated paper dust cap



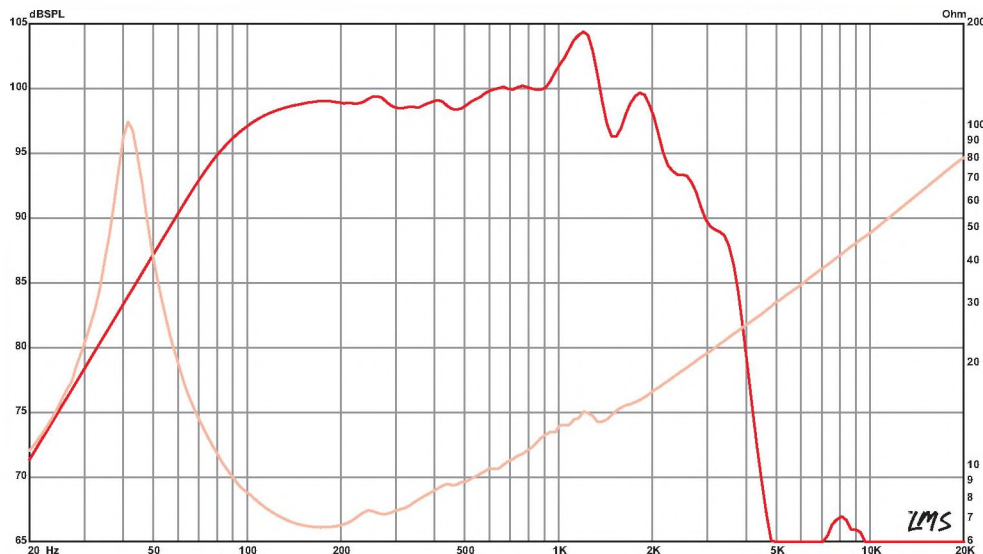
THIELE & SMALL PARAMETERS

Fs	44 Hz
Re	5.5 Ω
Le	0.93 mH
Qms	8.97
Qes	0.48
Qts	0.46
Vas	5.33 cu.ft., 150.9 liters
Vd	846 cc
Cms	0.14 mm/N
BL	17 T-M
Mms	93 grams
EBP	90
Xmax	9.6 mm
Sd	881.1 cm ²
Xlim	17 mm

MOUNTING INFORMATION

Recommended Enclosure Volume	Sealed	N/A
	Vented	99–195 liters, 3.5–6.9 cu.ft.
Driver Volume Displaced		0.09 cu.ft., 2.56 liters
Overall Diameter		15.32", 389.1 mm
Baffle Hole Diameter		14.03", 356.4 mm
Front Sealing Gasket		Yes
Rear Sealing Gasket		Yes
Mounting Holes Diameter		0.28", 7.1 mm
Mounting Holes B.C.D.		14.56", 369.8 mm
Depth		7.25", 184.2 mm
Net Weight		8.6 lbs , 3.9 kg
Shipping Weight		10.7 lbs , 4.85 kg

FREQUENCY RESPONSE & IMPEDANCE CURVE*



* See footnotes on page 155 for information regarding usable frequency range, nominal impedance, power rating and sensitivity.