

Pre/power amplifier and motor governor for 3V headphone stereos

BA3528AFP/BA3529AFP

The BA3528AFP and AB3529AFP have been developed for headphone stereos. They run off a 3V power supply, and include dual pre- and power amplifiers, and a motor governor. The preamplifiers are direct-coupled, and the power amplifiers use a fixed-gain NF circuit. An on-chip V_{REF} amplifier makes output coupling capacitors unnecessary, and the motor governor uses a bridge ratio system to minimize the external parts count and make reliable and compact designs possible.

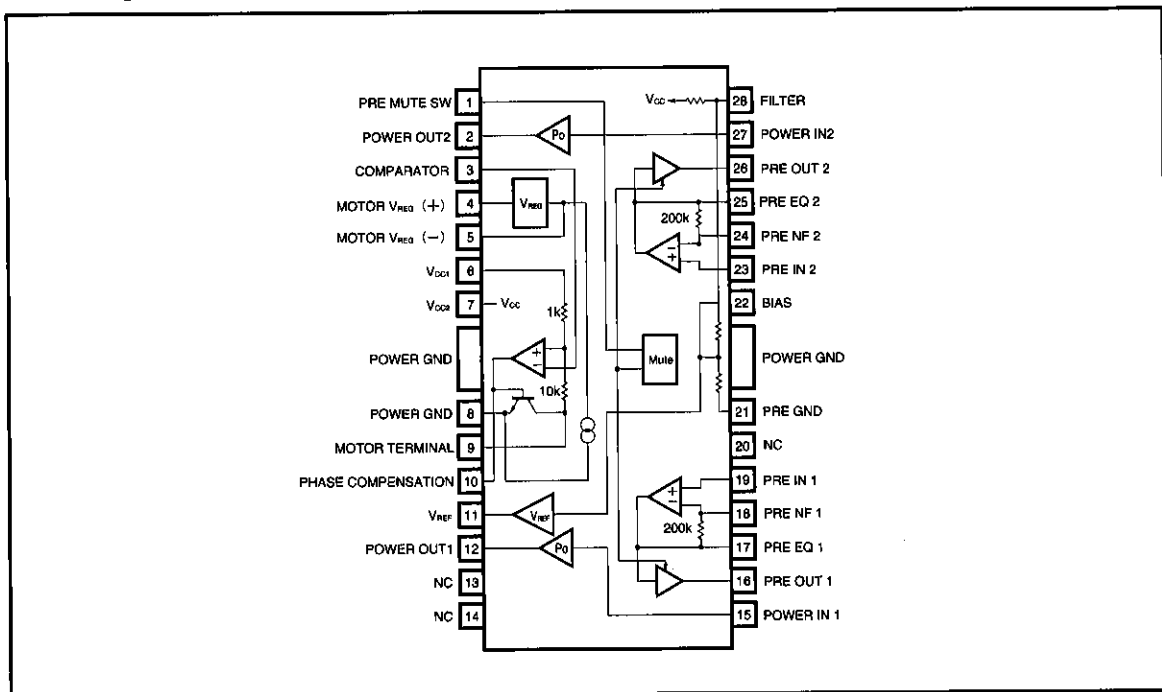
● Applications

3V portable stereo equipment

● Features

- 1) All the functions required for headphone stereo units on a single chip.
- 2) Preamplifier includes a mute amplifier.
- 3) Direct-coupled preamplifier.
- 4) No output coupling capacitors required for the power amplifiers.
- 5) Power amplifiers do not require oscillation prevention measures.
- 6) Power amplifier gain allows use of noise reduction (BA3529AFP).

● Block diagram



● Absolute maximum ratings (Ta = 25°C)

Parameter	Symbol	Limits	Unit
Supply voltage	V _{CC}	6	V
Power dissipation	P _d	1.7*	W
Operating temperature	T _{opr}	-25~75	°C
Storage temperature	T _{stg}	-55~150	°C

* Reduced by 13.6mW for each increase in Ta of 1°C over 25°C
(when mounted on a 90mm x 50mm x 1.6mm glass epoxy PCB).

● Recommended operating conditions (Ta = 25°C)

Parameter	Symbol	Min.	Typ.	Max.	Unit
Supply voltage	V _{CC}	1.8	3.0	6.0	V

Pre/power governors for headphone stereos

Low-frequency amplifiers

●Electrical characteristics (unless otherwise specified $T_a = 25^\circ\text{C}$, $V_{CC} = 3\text{V}$, and $f = 1\text{kHz}$)

BA3528AFP

Parameter	Symbol	Min.	Typ.	Max.	Unit	Conditions	Measurement Circuit	
Quiescent circuit current	I_Q	—	11	18	mA	$V_{IN}=0V_{rms}$	Fig.13	
Channel separation	CS L-R	30	40	—	dB	$R_g=2.2k\Omega$, $R_L=32\Omega$		
Preamplifier						$R_L=10k\Omega$		
Open-circuit voltage gain	G_{VO}	72	80	—	dB	$V_O=200mV_{rms}$		
Closed-circuit voltage gain	G_{VC1}	33	36	39	dB	$V_O=100mV_{rms}$		
Maximum output voltage	V_{OM}	350	500	—	mV_{rms}	THD=1%		
Total harmonic distortion	THD1	—	0.03	0.2	%	$V_O=200mV_{rms}$		
Input conversion-noise voltage	V_{NIN}	—	1.0	1.8	μV_{rms}	$R_g=2.2k\Omega$, BPF=20~20kHz		
Ripple rejection	RR1	43	53	—	dB	$f_{RR}=100\text{Hz}$, $V_{RR}=-20\text{dBm}$		
Input bias current	I_b	—	365	850	nA	$V_{IN}=0V_{rms}$		
Mute level	MUTE	—	80	—	dB			
Power amplifier						$R_L=32\Omega$ (excluding P_{OUT1})		
Rated output 1	P_{OUT1}	25	34	—	mW/ch	$R_L=16\Omega$, THD=10%		
Rated output 2	P_{OUT2}	14.5	20	—	mW/ch	$R_L=32\Omega$, THD=10%		
Total harmonic distortion	THD 2	—	0.2	1.0	%	$P_O=1\text{mW}$		
Output noise voltage	V_{NO}	—	65	100	μV_{rms}	BPF=20~20kHz		
Ripple rejection	RR2	53	61	—	dB	$f_{RR}=100\text{Hz}$, $V_{RR}=-20\text{dBm}$		
Closed-circuit voltage gain	G_{VC2}	33	36	39	dB	$V_O=300mV_{rms}$		
Input resistance	R_{IN}	13	18	23	k Ω			
Motor controller								
Quiescent circuit current	I_Q	—	2	3.5	mA			
Reference voltage	V_{REG}	1.16	1.23	1.31	V	Voltage between pins 4 and 5 ($R_{5-4}\geq 20k\Omega$)		
Saturation voltage	V_{SAT}	—	0.2	0.6	V	$V_{CC}=1.8\text{V}$, $R_b=4.7\Omega$		
Voltage characteristic 1	$\frac{\Delta V_{REG}}{V_{REG}}/V_{CC}$	-1.25	0.1	1.25	%/V	$V_{CC}=1.8\text{V}\sim 6\text{V}$		
Voltage characteristic 2	$\frac{\Delta V_b}{V_b}/V_{CC}$	-1.2	0.1	1.2	%/V	$V_{CC}=1.8\text{V}\sim 6\text{V}$		
Current characteristic	$\frac{\Delta V_{REG}}{V_{REG}}/I_b$	-0.2	0.01	0.2	%/A	$I_Q=1\text{mA}\sim 20\text{mA}$		
Temperature characteristic	$\frac{\Delta V_{REG}}{V_{REG}}/T_a$	—	0.01	—	%/C	$T_a=-25\sim 75^\circ\text{C}$		

●Electrical characteristics
BA3529AFP

Parameter	Symbol	Min.	Typ.	Max.	Unit	Conditions	Measurement Circuit
Quiescent circuit current	I_Q	—	11	18	mA	$V_{IN}=0V_{rms}$	Fig.13
Channel separation	CS L-R	35	45	—	dB	$R_g=2.2k\Omega$, $R_L=32\Omega$	
Preamplifier						$R_L=10k\Omega$	
Open-circuit voltage gain	G_{VO}	72	80	—	dB	$V_O=200mV_{rms}$	
Closed-circuit voltage gain	G_{VC1}	33	36	39	dB	$V_O=100mV_{rms}$	
Maximum output voltage	V_{OM}	350	500	—	mV _{rms}	THD=1%	
Total harmonic distortion	THD1	—	0.03	0.2	%	$V_O=200mV_{rms}$	
Input conversion-noise voltage	V_{NIN}	—	1.0	1.8	μV_{rms}	$R_g=2.2k\Omega$, BPF=20~20kHz	
Ripple rejection	RR1	43	53	—	dB	$f_{RR}=100Hz$, $V_{RR}=-20dBm$	
Input bias current	I_B	—	365	850	nA	$V_{IN}=0V_{rms}$	
Mute level	MUTE	—	80	—	dB		
Power amplifier						$R_L=32\Omega$ (excluding P_{OUT1})	
Rated output 1	P_{OUT1}	25	34	—	mW/ch	$R_L=16\Omega$, THD=10%	
Rated output 2	P_{OUT2}	14.5	20	—	mW/ch	$R_L=32\Omega$, THD=10%	
Total harmonic distortion	THD 2	—	0.1	0.9	%	$P_O=1mW$	
Output noise voltage	V_{NO}	—	26	50	μV_{rms}	BPF=20~20kHz	
Ripple rejection	RR2	61	69	—	dB	$f_{RR}=100Hz$, $V_{RR}=-20dBm$	
Closed-circuit voltage gain	G_{VC2}	25	27	29	dB	$V_{IN}=300V_{rms}$	
Input resistance	R_{IN}	13	18	23	k Ω		
Motor controller							
Quiescent circuit current	I_Q	—	2	3.5	mA		
Reference voltage	V_{REG}	1.16	1.23	1.31	V	Voltage between pins 4 and 5 ($R_s \geq 20k\Omega$)	
Saturation voltage	V_{SAT}	—	0.2	0.6	V	$V_{CC}=1.8V$, $R_s=4.7\Omega$	
Voltage characteristic 1	$\frac{\Delta V_{REG}}{V_{REG}}/V_{CC}$	-1.25	0.1	1.25	%/V	$V_{CC}=1.8V \sim 6V$	
Voltage characteristic 2	$\frac{\Delta V_a}{V_a}/V_{CC}$	-1.2	0.1	1.2	%/V	$V_{CC}=1.8V \sim 6V$	
Current characteristic	$\frac{\Delta V_{REG}}{V_{REG}}/I_b$	-0.2	0.01	0.2	%/A	$I_b=1mA \sim 20mA$	
Temperature characteristic	$\frac{\Delta V_{REG}}{V_{REG}}/T_a$	—	0.01	—	%/°C	$T_a=-25 \sim 75^\circ C$	

Pre / power governors for headphone stereos
Low-frequency amplifiers

● Electrical characteristic curves

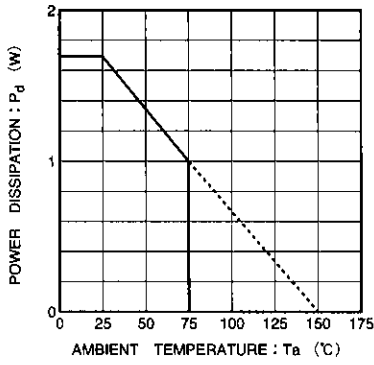


Fig. 1 Power dissipation vs. ambient temperature

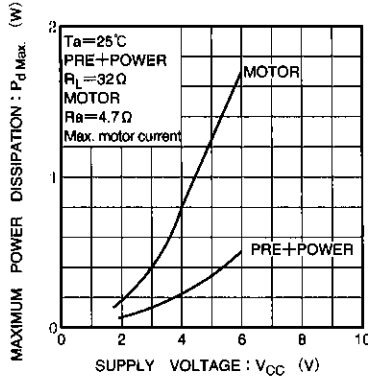


Fig. 2 Maximum power dissipation vs. supply voltage

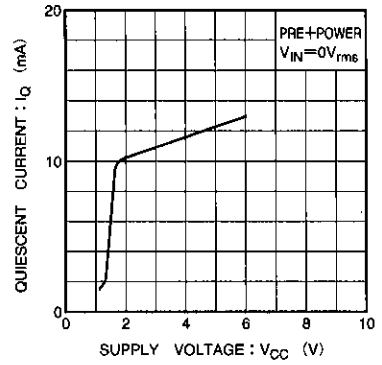


Fig. 3 Quiescent current vs. supply voltage

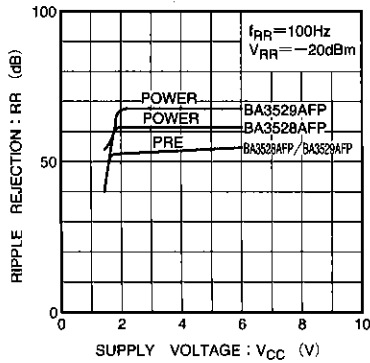


Fig. 4 Ripple rejection vs. supply voltage

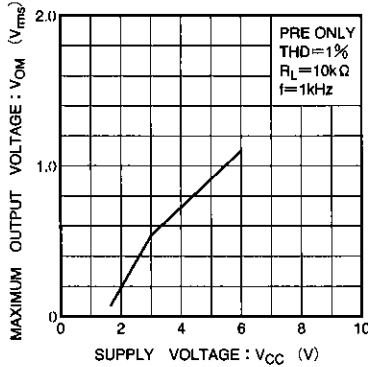


Fig. 5 Maximum output voltage vs. supply voltage

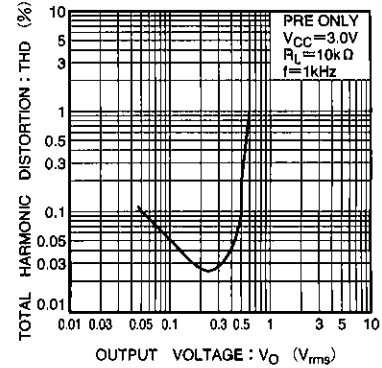


Fig. 6 Total harmonic distortion vs. output voltage

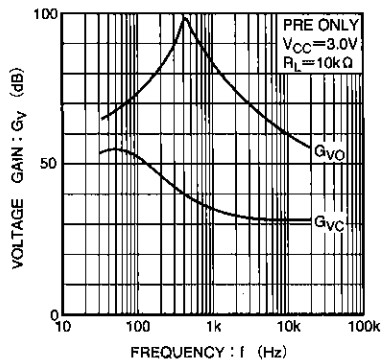


Fig. 7 Voltage gain vs. frequency

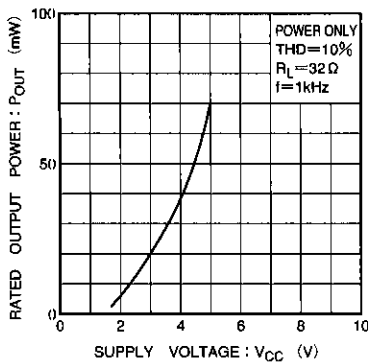


Fig. 8 Rated output power vs. supply voltage

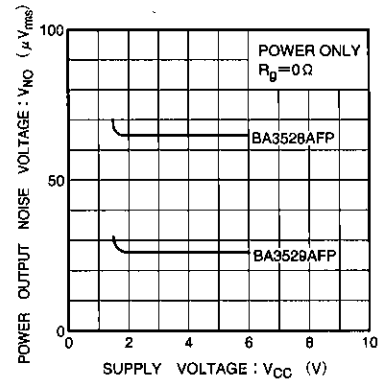


Fig. 9 Output noise voltage vs. supply voltage

● Electrical characteristic curves

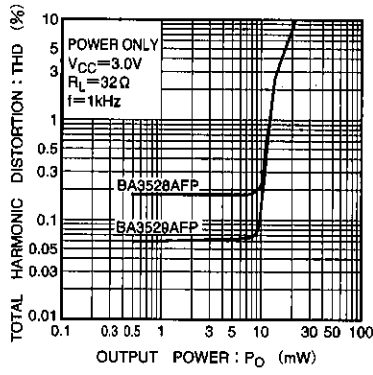


Fig. 10 Total harmonic distortion vs. output voltage

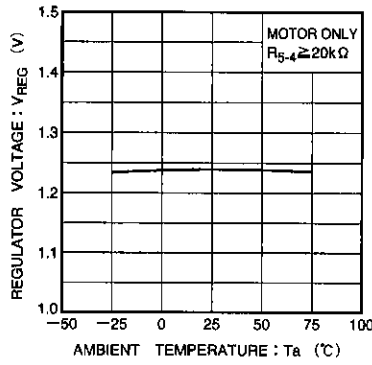


Fig. 11 Regulator voltage vs. ambient temperature

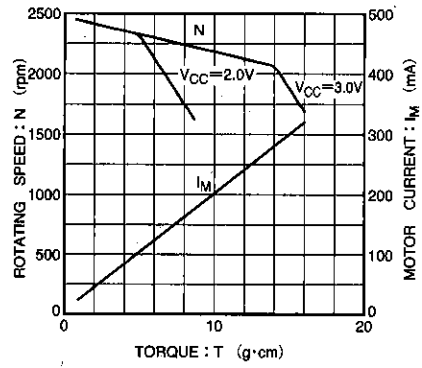


Fig. 12 Rotation speed and motor current vs. torque

Pre/power governors for headphone stereos

Low-frequency amplifiers

● Measurement circuit

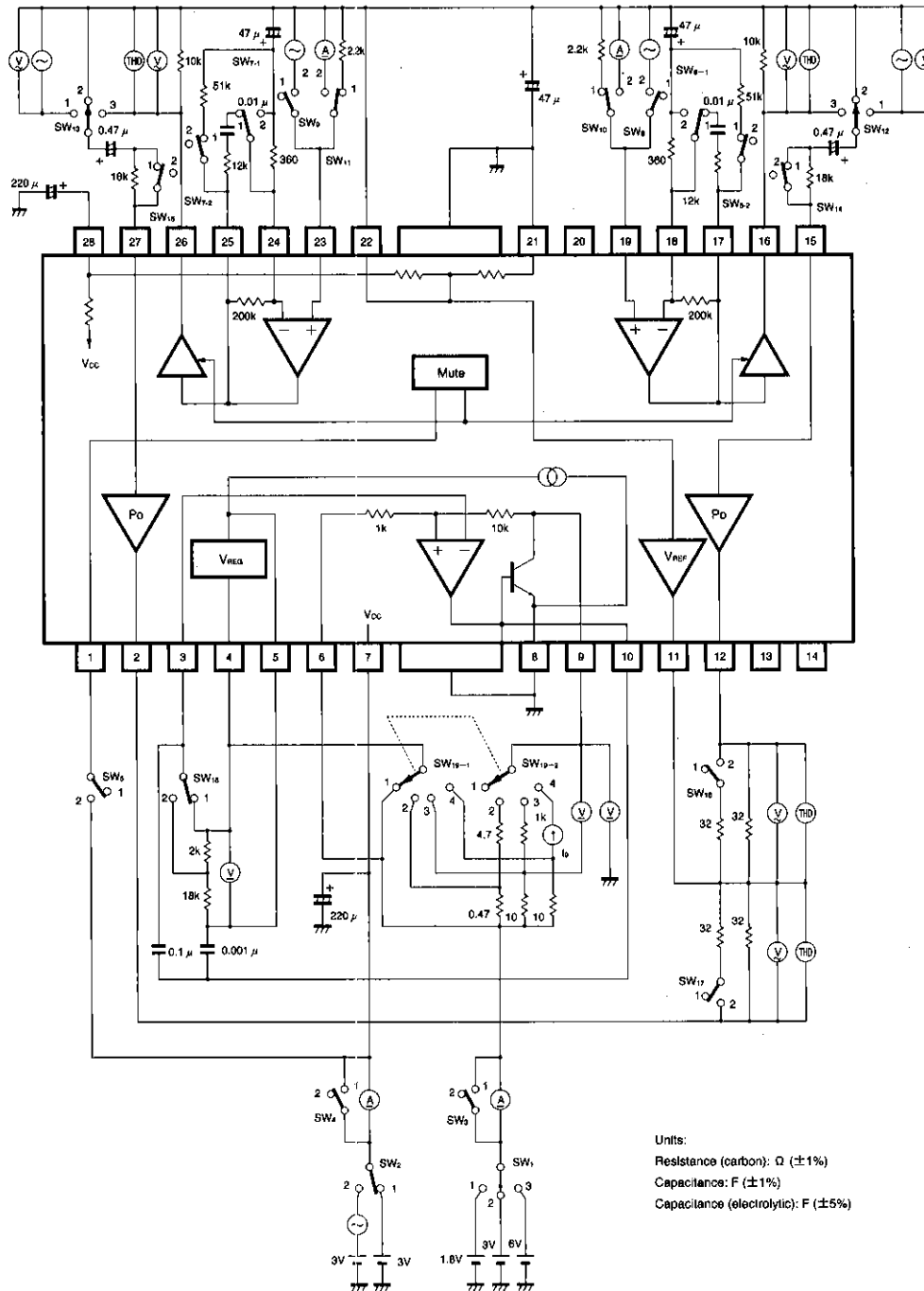


Fig. 13

(5) Motor controller circuit

The motor controller circuit uses a resistance bridge to maintain uniform motor speed regardless of changes in supply voltage, ambient temperature and load torque. Speed control is performed by a comparator and a stable on-chip reference voltage ($V_{REG} = 1.23V$). See Fig. 18.

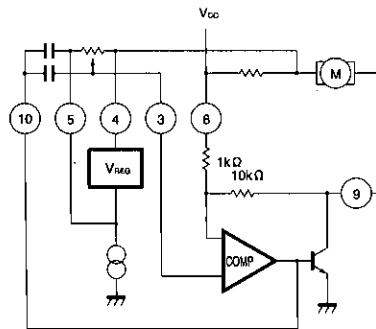


Fig. 18

● Application notes

(1) Application circuits

Provided the recommended circuit constants are used, the application circuits should function correctly. However, we recommend that you confirm the characteristics of the circuits in actual use. If you change the circuit constants, check both the static and transient characteristics of the circuit, and allow sufficient margin to accommodate variations between both ICs and external components.

(2) Recommended supply voltage

The values given in the electrical characteristics table are guaranteed only for $T_a = 25^\circ\text{C}$, and $V_{CC} = 3V$. However, as long as the IC is operated within the recommended operating temperature and supply voltage ranges, the general circuit functions are guaranteed to operate correctly, and there will not be significant changes in the electrical characteristics.

(3) Power dissipation

The internal power dissipation of the IC depends strongly on the value of the load resistance and the supply voltage.

For this reason, when designing sets for mass production, pay due consideration to the power dissipation characteristics of the IC with respect to ambient temperature and supply voltage (see Figs. 1 and 2). Note, that the maximum allowed power dissipation is 1.7W at 25°C , and this decreases by 13.6mW for each increase in temperature of 1°C over this.

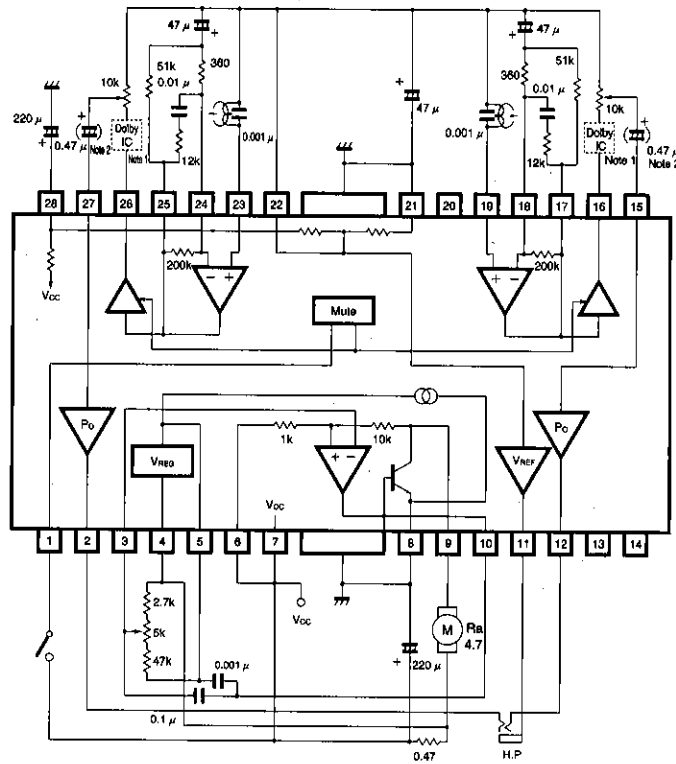
(4) PCB layout

In certain cases, the external circuit wiring can induce oscillations in the IC or degrade circuit performance. To avoid this, design the PCB wiring in such a way as to keep external wiring as short as possible, and ensure that it does not have common impedance.

● Application example

Pre/power governors for headphone stereos

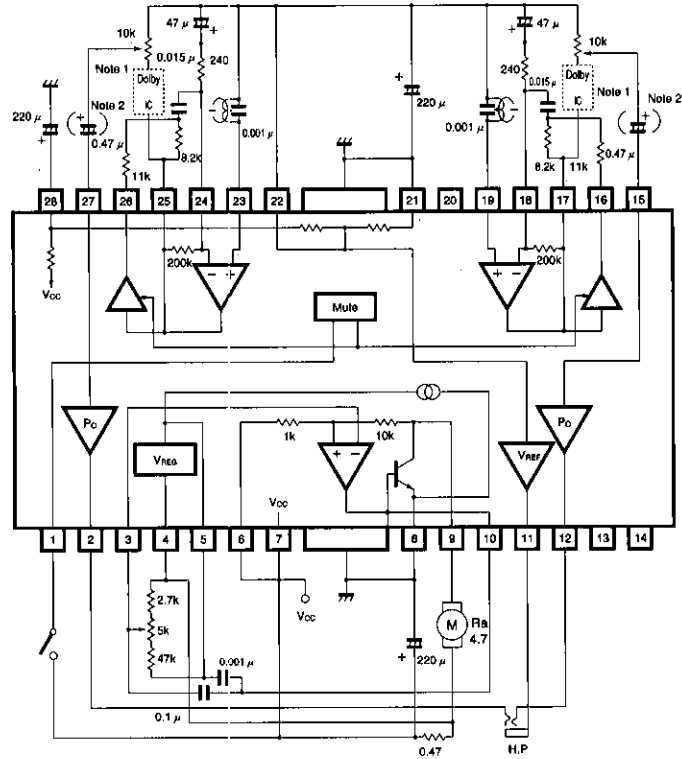
Low-frequency amplifiers



Units
 Resistors: Ω (±5%)
 Capacitors: F (±10%)
 Capacitors (electrolytic): F (±20%)
 Note 1:
 For Dolby use (BA3528AFP only).
 Note 2:
 Coupling capacitors not required.

Fig. 19 Application example circuit diagram (headphone stereo with pre-mute).

● Application example



Units
 Resistors: Ω (±5%)
 Capacitors: F (±10%)
 Capacitors (electrolytic): F (±20%)

Note 1:
 For Dolby use (BA3529AFP only).
 Note 2:
 Coupling capacitors not required.

Fig. 20 Application example circuit diagram (headphone stereo metal/normal switch).

●External components

(1) Preamplifier

If the closed-loop voltage gain (G_{VC}) of the pre-amplifier is below 30dB for a frequency of $f = 1\text{kHz}$, oscillation may occur.

(2) Playback equalizer terminal (NAB)

The playback equalizer characteristics are determined by the RC circuit connected between the output and NF pins.

For the circuit in Fig. 21, with a closed-loop voltage gain of G_{VC} at an input frequency of 1 kHz, the relationships between the values of the RC circuit components are as follows :

$$C_1 = \frac{3180 \times 10^{-6}}{R_1 + 200 \times 10^3}$$

$$R_2 = 2 \times R_1 \times 10^{-G_{VC}/20}$$

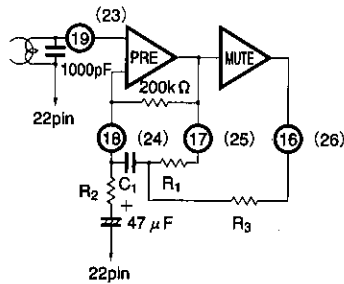


Fig. 21

The equalizer can be switched on and off using the mute amplifier. If equalization for metal tape is added, determine R_3 as follows :

$$R_3 = 1.4 \times R_1$$

(3) Pre-mute switching noise

If you use the mute amplifier for pre-muting,

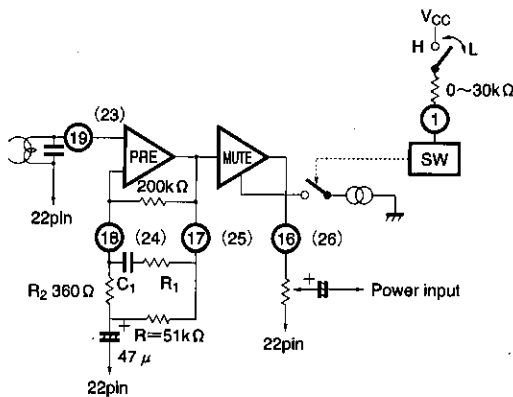


Fig. 22

the voltage difference between the pre-output and pin 22 will generate switching noise (a "pop" sound) when the mute is switched on and off. To reduce the DC gain and reduce this switching noise, we recommend that you connect a resistor ($R = 51\text{k}\Omega$) as shown in Fig. 22. This resistor reduces the gain of the circuit in the bass region of the playback equalizer as shown in the graph in Fig. 23. By using different combinations of component values for R_1 and C_1 , it is possible to compensate for this effect in the low-frequency region as shown in the graph in Fig. 24.

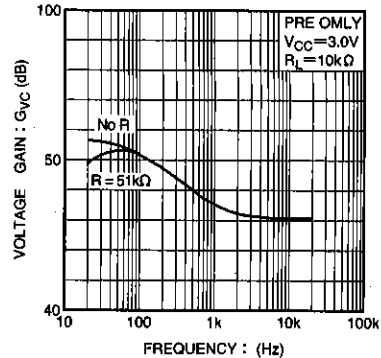


Fig. 23

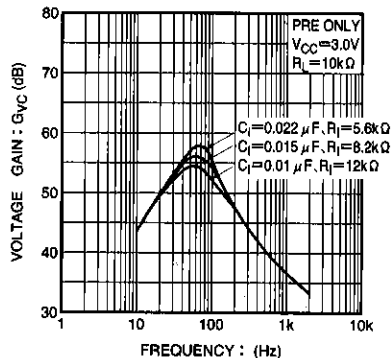


Fig. 24

Pre/power governors for headphone stereos

Low-frequency amplifiers

(4) Mute amplifier output

To switch the mute amplifier on and off, switch the constant-current supply for the mute amplifier off and on by switching the voltage on pin 1 (Pre-mute SW) high or low. When the mute is switched on, the mute amplifier output goes open circuit and the output voltage is unstable resulting in the generation of an audible "pop" sound. To prevent this, bias pin 22 through the volume control as shown in Fig. 25.

In applications that use a directly connected output coupling capacitor, connect a resistor as shown in the circuit diagram in Fig. 26 to reduce the pre-mute switching noise described in (3) above.

● External components

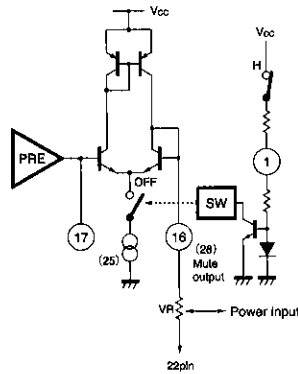


Fig. 25

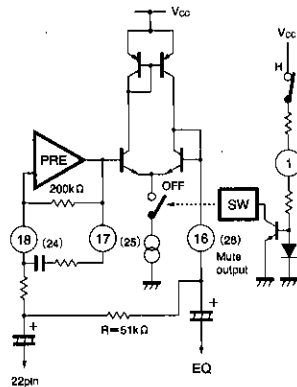


Fig. 26

(5) Preventing oscillation

Connect a capacitor of approximately 1000pF between the preamplifier input and pin 22 to prevent oscillation, and as a countermeasure against strong electric fields. This capacitor can also be used for treble-region compensation. In this case, decide on a value for it based on the relationship with the impedance of the magnetic head (see Fig. 27).

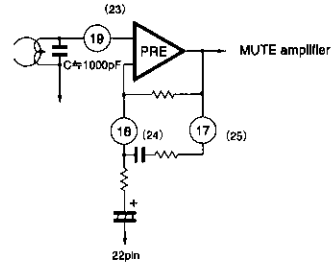


Fig. 27

When countermeasures against strong electric fields for the power amplifiers are required, connect bypass capacitors between each input pin and pin 22, and connect choke coils in series with the output pins and the headphones. The component values should be about 330pF for the bypass capacitors, and the 10 μH for the choke coils so that they do not effect the audible frequency range.

Another effective measure is to connect a bypass capacitor of about 1000pF in parallel with the filter capacitor between pin 22 and ground (pin 21). Refer to the circuit diagram in Fig. 28.

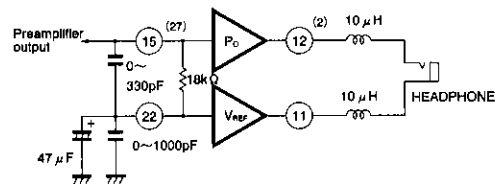


Fig. 28

(6) Motor speed setting

To control the motor speed, the stable built-in reference voltage V_{REG} is divided across R_4 and R_5 , and this voltage is used as the speed control voltage. The balance conditions for the bridge circuit are as follows :

$$E_a = \left(R_1 \times \frac{R_2}{R_3} - R_a \right) I_a + \left(1 + \frac{R_2}{R_3} \right) \left(\frac{R_5}{R_4 + R_5} \right) V_{REG}$$

(however, $I_r \ll I_a$)

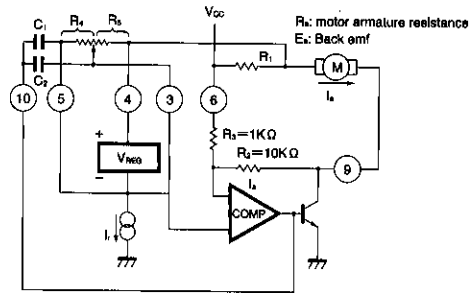
From this, the balance conditions for the load fluctuation zero are :

$$R_a = 10 \times R_1$$

$$E_a = 11 \times \frac{R_5}{R_4 + R_5} V_{REG}$$

However, if $R_a < 10 \times R_1$, the amount of positive feedback increases, and the circuit will be unstable, so within the operating temperature range, always make

$$R_a \geq 10 \times R_1 \text{ (see Fig. 29).}$$



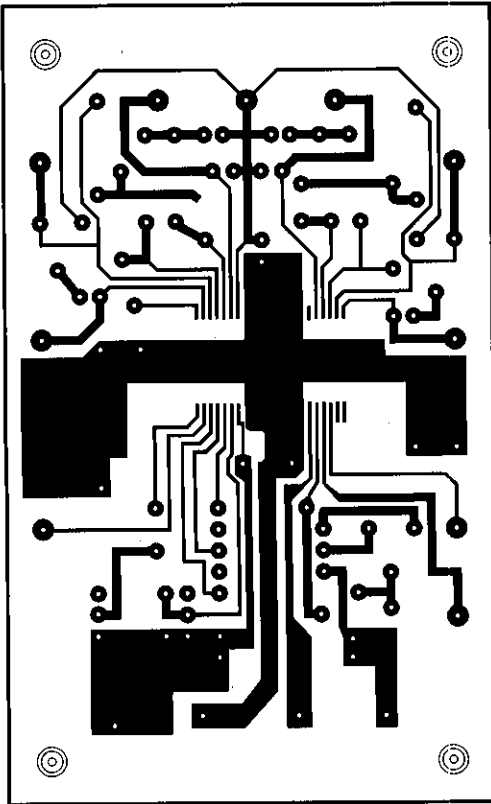
C1 and C2: capacitors to prevent oscillation

Fig. 29

Pre-power governors for headphone stereos

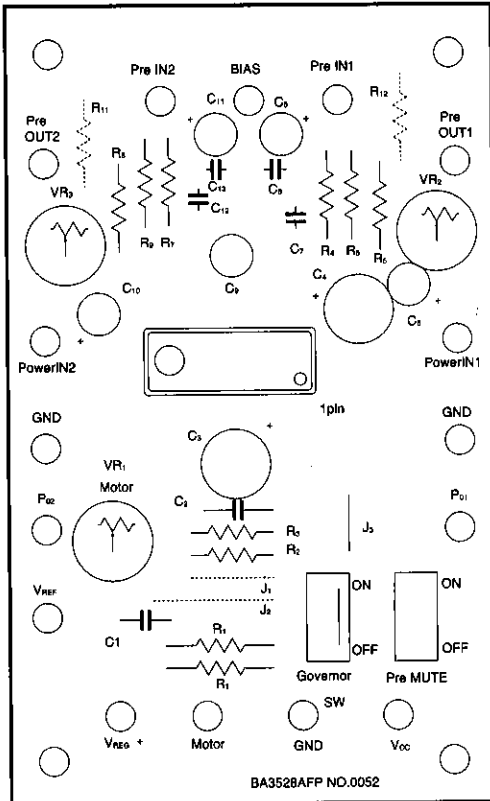
Low-frequency amplifiers

●PCB layout for application example circuit



PCB thickness: 1.6mm
Copper thickness: 35 μm
Copper side

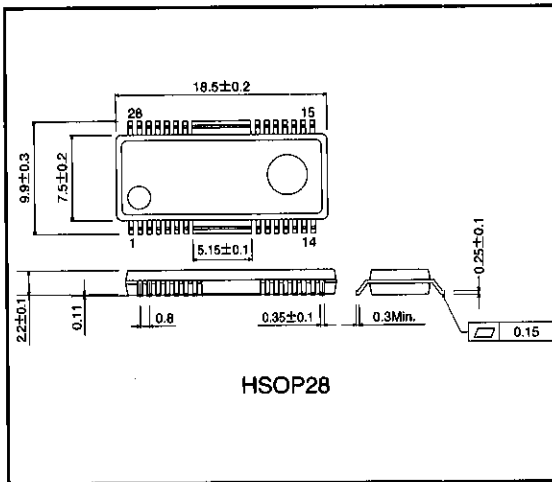
●PCB layout for application example circuit (component side)



Silk side

BA3528AFP NO.0052

●External dimensions (Unit: mm)



Notes

- The contents described in this catalogue are correct as of March 1997.
- No unauthorized transmission or reproduction of this book, either in whole or in part, is permitted.
- The contents of this book are subject to change without notice. Always verify before use that the contents are the latest specifications. If, by any chance, a defect should arise in the equipment as a result of use without verification of the specifications, ROHM CO., LTD., can bear no responsibility whatsoever.
- Application circuit diagrams and circuit constants contained in this data book are shown as examples of standard use and operation. When designing for mass production, please pay careful attention to peripheral conditions.
- Any and all data, including, but not limited to application circuit diagrams, information, and various data, described in this catalogue are intended only as illustrations of such devices and not as the specifications for such devices. ROHM CO., LTD., disclaims any warranty that any use of such device shall be free from infringement of any third party's intellectual property rights or other proprietary rights, and further, assumes absolutely no liability in the event of any such infringement, or arising from or connected with or related to the use of such devices.
- Upon the sale of any such devices; other than for the buyer's right to use such devices itself, resell or otherwise dispose of the same; no express or implied right or license to practice or commercially exploit any intellectual property rights or other proprietary rights owned or controlled by ROHM CO., LTD., is granted to any such buyer.
- The products in this manual are manufactured with silicon as the main material.
- The products in this manual are not of radiation resistant design.

The products listed in this catalogue are designed to be used with ordinary electronic equipment or devices (such as audio-visual equipment, office-automation equipment, communications devices, electrical appliances, and electronic toys). Should you intend to use these products with equipment or devices which require an extremely high level of reliability and the malfunction of which would directly endanger human life (such as medical instruments, transportation equipment, aerospace machinery, nuclear-reactor controllers, fuel controllers, or other safety devices) please be sure to consult with our sales representatives in advance.

- Notes when exporting
 - It is essential to obtain export permission when exporting any of the above products when it falls under the category of strategic material (or labor) as determined by foreign exchange or foreign trade control laws.
 - Please be sure to consult with our sales representatives to ascertain whether any product is classified as a strategic material.