

EVALUATION KIT  
AVAILABLE

# MAXIM

## -5V, -12V, -15V, and Adjustable Inverting Current-Mode PWM Regulators

### General Description

The MAX736/MAX737/MAX739/MAX759 are CMOS, inverting, switch-mode regulators with an internal power MOSFET. Guaranteed output power for the MAX739 is 1.25W when powered from a +4.5V input, and 1.5W when powered from +6V. Quiescent supply current for the MAX739 is typically 1.7mA, and a shutdown mode reduces this to 1µA. These power-conserving features, along with high efficiency and an application circuit that lends itself to miniaturization, make these parts excel in a broad range of on-card and portable equipment applications.

The MAX736/MAX737/MAX739 have fixed outputs of -12V, -15V, and -5V respectively. The MAX759 is adjustable from 0V to -15V. Output voltages beyond -15V require a transformer.

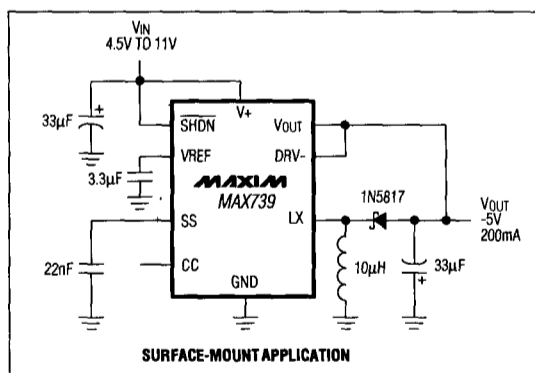
These inverting DC-DC converters employ a high-performance, current-mode, pulse-width modulation (PWM) control scheme to provide tight output voltage regulation and low noise. The fixed-frequency oscillator is factory-trimmed to 165kHz, allowing easy noise filtering. The devices are production tested in an actual application circuit, and output accuracy is guaranteed at ±5% over all specified conditions of line, load, and temperature.

The input voltage range is +4V to +15V. For similar devices with smaller packages and an input voltage range of +4V to +11V, refer to the MAX735/MAX755 data sheet.

### Applications

Low-Noise Analog Signal Processing Circuits  
LCD Bias Supplies  
Power Supplies for ECL  
Board-Level DC-DC Conversion  
Battery-Powered Equipment  
Computer Peripherals

### Typical Operating Circuit



### Features

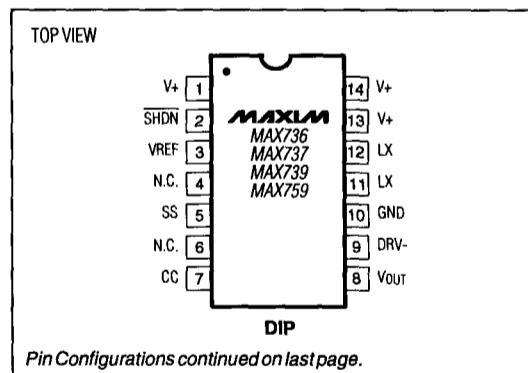
- ◆ Pre-Set -5V, -12V, -15V or Adjustable Outputs
- ◆ Convert Positive Voltages to Negative
- ◆ 1.25W Guaranteed Output Power
- ◆ 83% Typical Efficiency
- ◆ 1.7mA Quiescent Current (MAX739)
- ◆ 1µA Shutdown Mode (MAX739)
- ◆ +4V to +15V Input Voltage Range
- ◆ 165kHz Current-Mode PWM – Low Noise and Jitter
- ◆ Undervoltage Lockout and Soft-Start Protection

### Ordering Information

| PART      | TEMP. RANGE     | PIN-PACKAGE    |
|-----------|-----------------|----------------|
| MAX736CPD | 0°C to +70°C    | 14 Plastic DIP |
| MAX736CWE | 0°C to +70°C    | 16 Wide SO     |
| MAX736C/D | 0°C to +70°C    | Dice*          |
| MAX736EPD | -40°C to +85°C  | 14 Plastic DIP |
| MAX736EWE | -40°C to +85°C  | 16 Wide SO     |
| MAX736MJD | -55°C to +125°C | 14 CERDIP**    |
| MAX737CPD | 0°C to +70°C    | 14 Plastic DIP |
| MAX737CWE | 0°C to +70°C    | 16 Wide SO     |
| MAX737C/D | 0°C to +70°C    | Dice*          |
| MAX737EPD | -40°C to +85°C  | 14 Plastic DIP |
| MAX737EWE | -40°C to +85°C  | 16 Wide SO     |
| MAX737MJD | -55°C to +125°C | 14 CERDIP**    |

Ordering Information continued on last page of data sheet.  
\* Contact factory for dice specifications.  
\*\*Contact factory for availability and processing to MIL-STD-883.

### Pin Configurations



MAX736/MAX737/MAX739/MAX759

MAXIM

Maxim Integrated Products 3-177

Call toll free 1-800-998-8800 for free samples or literature.

## -5V, -12V, -15V, and Adjustable Inverting Current-Mode PWM Regulators

### ABSOLUTE MAXIMUM RATINGS

|  |                      |  |                 |
|--|----------------------|--|-----------------|
| Supply Voltage (V+ to GND) (Note 1)        |                      | Continuous Power Dissipation (T <sub>A</sub> = +70°C)          |                 |
| MAX739/MAX759                              | 15.5V, -0.3V         | 14-Pin Plastic DIP (derate 10.00mW/°C above +70°C) . . . 800mW |                 |
| MAX736                                     | 9.5V, -0.3V          | 16-Pin Wide SO (derate 9.52mW/°C above +70°C) . . . 762mW      |                 |
| MAX737                                     | 6.5V, -0.3V          | 14-Pin CERDIP (derate 9.09mW/°C above +70°C) . . . 727mW       |                 |
| <b>Maximum Input/Output Differential</b>   |                      | Operating Temperature Ranges:                                  |                 |
| MAX736/MAX737                              | 22V                  | MAX73_/MAX759C_  | 0°C to +70°C    |
| MAX739/MAX759 (Non-Bootstrapped)           | 22V                  | MAX73_/MAX759E_  | -40°C to +85°C  |
| MAX739/MAX759 (Bootstrapped)               | 17V                  | MAX73_/MAX759MJD   | -55°C to +125°C |
| Negative Drive Voltage (DRV- to V+)        | -17V, +0.3V          | Junction Temperatures:   |                 |
| Switch Voltage (LX to V+)                  | -22.5V, +0.3V        | MAX73_/MAX759E/C_  | +150°C          |
| Feedback Voltage (V <sub>OUT</sub> to GND) | ±50V                 | MAX73_/MAX759MJD   | +175°C          |
| Auxiliary Input Voltages                   |                      | Storage Temperature Range                                      | -65°C to +160°C |
| (SS, CC, SHDN to GND)                      | -0.3V to (V+ + 0.3V) | Lead Temperature (soldering, 10sec)                            | +300°C          |
| Peak Switch Current (I <sub>LX</sub> )     | 2.5A                 |  |                 |
| Reference Current (I <sub>VREF</sub> )     | 2.5mA                |  |                 |

**Note 1:** Output voltages beyond -5V or bootstrapped operation reduce the allowable supply voltage. See Maximum Input/Output Differential specifications.

*Stresses beyond those listed under "Absolute Maximum Ratings" may cause permanent damage to the device. These are stress ratings only, and functional operation of the device at these or any other conditions beyond those indicated in the operational sections of the specifications is not implied. Exposure to absolute maximum rating conditions for extended periods may affect device reliability.*

### ELECTRICAL CHARACTERISTICS

**Bootstrapped Mode** (Circuit of Figure 1, V+ = 5V, I<sub>LOAD</sub> = 0mA, DRV- = V<sub>OUT</sub> (-5V) (MAX739/MAX759), T<sub>A</sub> = T<sub>MIN</sub> to T<sub>MAX</sub>, unless otherwise noted.)

| PARAMETER           | CONDITIONS   | MIN              | TYP | MAX              | UNITS |
|---------------------|--|------------------|-----|------------------|-------|
| Input Voltage Range | DRV- ≥ -7V<br>MAX736   | 4.0              |     | 8.6              | V     |
|                     | DRV- ≥ -10V<br>MAX737  | 4.0              |     | 5.5              |       |
|                     | DRV- ≥ -5.25V<br>MAX739/MAX759   | 4.0              |     | 11.0             |       |
| Output Voltage      | V+ = 4.5V to 8.6V,<br>I <sub>LOAD</sub> = 0mA to 100mA<br>MAX736                       | -11.40           |     | -12.60           | V     |
|                     | V+ = 6V to 8.6V,<br>I <sub>LOAD</sub> = 0mA to 125mA<br>MAX736                         | -11.40           |     | -12.60           |       |
|                     | V+ = 4.5V to 5.5V,<br>I <sub>LOAD</sub> = 0mA to 100mA<br>MAX737                       | -14.25           |     | -15.75           |       |
|                     | V+ = 4.5V to 11V,<br>I <sub>LOAD</sub> = 0mA to 250mA<br>MAX739<br>MAX759 (Notes 2, 3) | -4.750<br>-4.775 |     | -5.250<br>-5.225 |       |
| Output Current      | V+ = 4.5V to 8.6V<br>MAX736  | 100              | 140 |                  | mA    |
|                     | V+ = 6V to 8.6V<br>MAX736  | 125              | 150 |                  |       |
|                     | V+ = 4.5V to 5.5V<br>MAX737  | 100              | 110 |                  |       |
|                     | V+ = 4.5V to 11V<br>T <sub>A</sub> = -40°C to +85°C<br>MAX739/MAX759<br>(Note 2)       | 250              | 300 |                  |       |
|                     | V+ = 4.5V to 11V<br>T <sub>A</sub> = -55°C to +125°C<br>MAX739/MAX759<br>(Note 2)      | 200              | 250 |                  |       |
|                     | V+ = 6V to 11V<br>MAX739/MAX759<br>(Note 2)  | 300              | 500 |                  |       |
| Supply Current      | MAX736   |                  | 4.2 | 6.0              | mA    |
|                     | MAX737   |                  | 6.1 | 9.5              |       |
|                     | MAX739   |                  | 1.7 | 3.5              |       |
|                     | MAX759   |                  | 2.2 | 4.0              |       |

## -5V, -12V, -15V, and Adjustable Inverting Current-Mode PWM Regulators

### ELECTRICAL CHARACTERISTICS (continued)

**Bootstrapped Mode** (Circuit of Figure 1,  $V_+ = 5V$ ,  $I_{LOAD} = 0mA$ ,  $DRV- = V_{OUT} (-5V)$  (MAX739/MAX759),  $T_A = T_{MIN}$  to  $T_{MAX}$ , unless otherwise noted.)

| PARAMETER                  | CONDITIONS               | MIN           | TYP  | MAX         | UNITS            |     |
|----------------------------|--------------------------|---------------|------|-------------|------------------|-----|
| Standby Current            | $V_{SHDN} = 0V$ (Note 4) |               | 1.0  | 100.0       | $\mu A$          |     |
| SHDN Logic High Voltage    |                          |               |      | $V_+ - 0.5$ | V                |     |
| SHDN Logic Low Voltage     |                          | 0.25          |      |             | V                |     |
| SHDN Input Current         |                          |               | 0.1  | 1.0         | $\mu A$          |     |
| LX Leakage Current         |                          |               | 10   |             | $\mu A$          |     |
| Undervoltage Lockout       | Measured at $V_+$        |               | 3.7  | 4.0         | V                |     |
| Reference Voltage          | (Note 3)                 | 1.16          | 1.23 | 1.30        | V                |     |
| Reference Drift            |                          |               | 50   |             | ppm/ $^{\circ}C$ |     |
| Compensation-Pin Impedance |                          |               | 6    |             | k $\Omega$       |     |
| Oscillator Frequency       |                          | MAX736/MAX739 | 145  | 185         | 220              | kHz |
|                            |                          | MAX737/MAX759 | 145  | 185         | 220              |     |

### ELECTRICAL CHARACTERISTICS

**Non-Bootstrapped Mode** (Circuit of Figure 1,  $T_A = T_{MIN}$  to  $T_{MAX}$ , unless otherwise noted.)

| PARAMETER                        | CONDITIONS         | MIN             | TYP    | MAX    | UNITS |
|----------------------------------|--------------------|-----------------|--------|--------|-------|
| Input Voltage Range              |                    | MAX736          | 4.0    | 8.6    | V     |
|                                  |                    | MAX737          | 4.0    | 5.5    |       |
|                                  |                    | MAX739/MAX759   | 4.0    | 15.0   |       |
| Output Voltage, No Load (Note 2) | $V_+ = 4V$ to 8.6V | MAX736          | -11.40 | -12.60 | V     |
|                                  | $V_+ = 4V$ to 5.5V | MAX737          | -14.25 | -15.75 |       |
|                                  | $V_+ = 4V$ to 15V  | MAX739          | -4.750 | -5.250 |       |
|                                  |                    | MAX759 (Note 2) | -4.775 | -5.225 |       |
| Output Current (Note 5)          | $V_+ = 5V$         | MAX736          | 70     |        | mA    |
|                                  |                    | MAX737          | 50     |        |       |
|                                  |                    | MAX739/MAX759   | 250    |        |       |
| Supply Current, No Load          | $V_+ = 5V$         | MAX736/MAX739   | 1.6    | 3.0    | mA    |
|                                  |                    | MAX737          | 2.5    | 4.5    |       |
|                                  |                    | MAX759          | 2.1    | 4.0    |       |

**Note 2:** MAX759 output voltage tests are performed using an external resistor divider to set the output voltage to -5V (see Figure 5,  $R_3 = 15k\Omega$ ,  $R_4 = 3.69k\Omega$ ).

**Note 3:** Output voltage tolerance is  $\pm 4.5\%$  plus external feedback resistor tolerances for the MAX759.

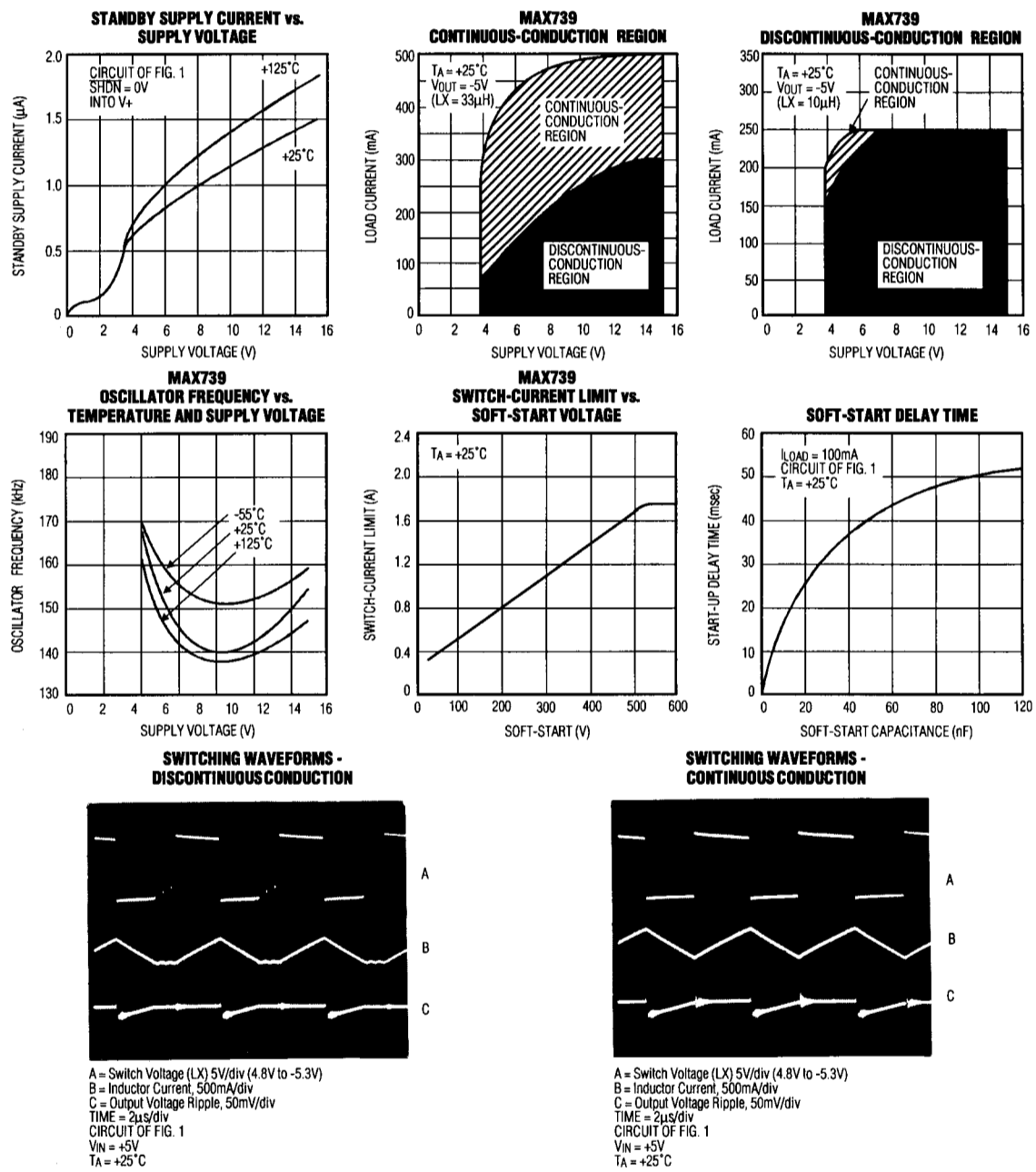
**Note 4:** The standby supply-current specification is set at  $100\mu A$  due to test method limitations rather than actual device performance. The two-sigma distribution of standby supply current is less than  $10\mu A$  (over temperature).

**Note 5:**  $10\mu H$  inductor used with the MAX736/MAX737.  $18\mu H$  inductor used with the MAX739/MAX759.

MAX736/MAX737/MAX739/MAX759

## -5V, -12V, -15V, and Adjustable Inverting Current-Mode PWM Regulators

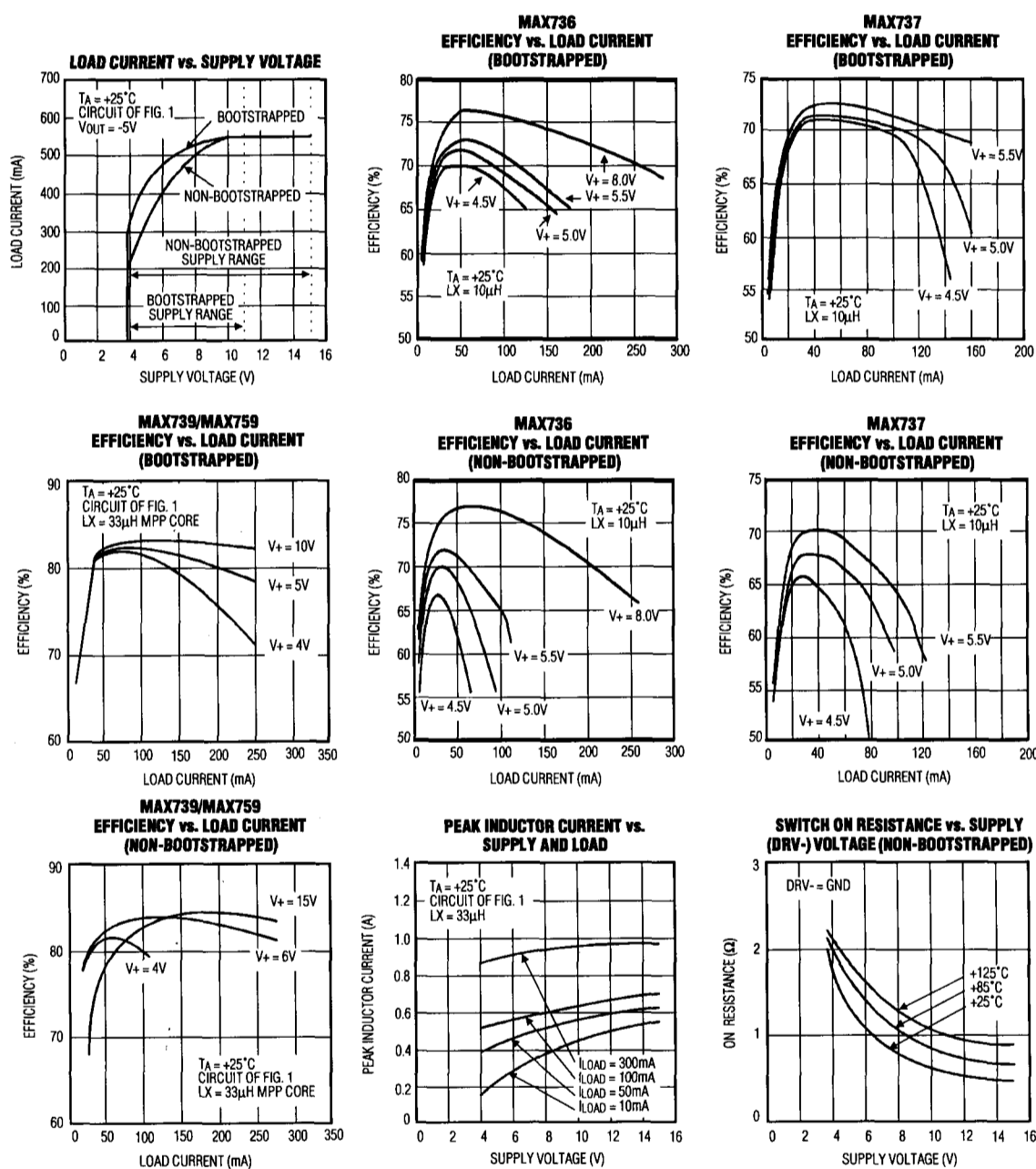
### Typical Operating Characteristics



## -5V, -12V, -15V, and Adjustable Inverting Current-Mode PWM Regulators

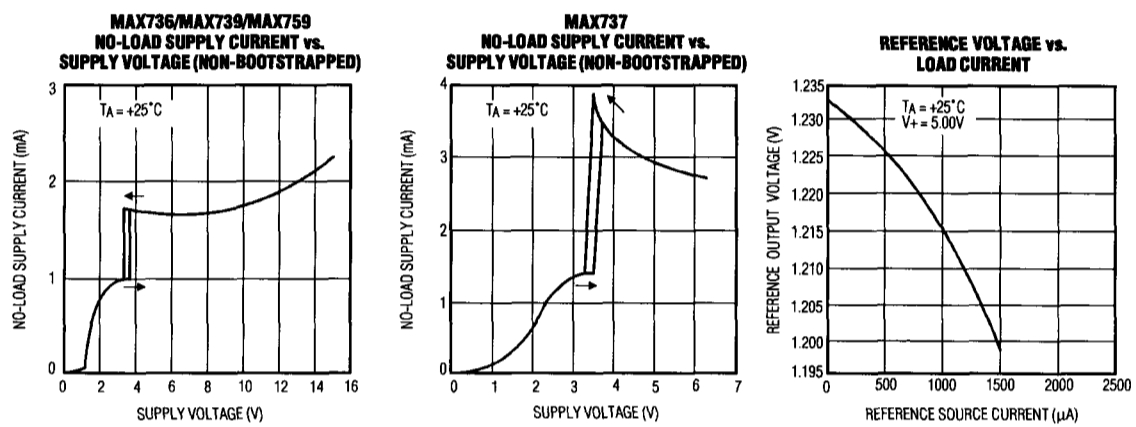
### Typical Operating Characteristics (continued)

**MAX736/MAX737/MAX739/MAX759**



## -5V, -12V, -15V, and Adjustable Inverting Current-Mode PWM Regulators

### Typical Operating Characteristics (continued)



### Pin Description

| PIN        |            | NAME | FUNCTION  |
|------------|------------|------|---|
| 14-PIN DIP | 16-PIN SO  |      |   |
| 1, 13, 14  | 1, 15, 16  | V+   | Positive Supply-Voltage Inputs. Connect all V+ pins together. Bypass with at least a 0.1 $\mu\text{F}$ capacitor close to V+ and GND pins.                  |
| 2          | 2          | SHDN | Shutdown Control. V+ = normal operation, GND = shutdown.  |
| 3          | 3          | VREF | Reference Voltage Output = +1.23V. Supplies up to 125 $\mu\text{A}$ for external loads.   |
| 4, 6       | 4, 5, 6    | N.C. | No Connect. Not internally connected.   |
| 5          | 7          | SS   | Soft-Start  |
| 7          | 8          | CC   | Compensation Input. CC is the input of the error amplifier, and is held at virtual ground. For the MAX759, CC is connected to an external resistor divider. |
| 8          | 9          | VOUT | Output Voltage feedback terminal (actually an input). Connected to internal resistors (MAX736/737/739 only). Do not connect on MAX759.                      |
| 9          | 10         | DRV- | Negative Drive Voltage Input is the negative supply rail for the push-pull stage that drives the internal power FET.  |
| 10         | 11         | GND  | Ground  |
| 11, 12     | 12, 13, 14 | LX   | Switch Output – internal P-channel MOSFET drain. Connect all LX pins together.  |

## -5V, -12V, -15V, and Adjustable Inverting Current-Mode PWM Regulators

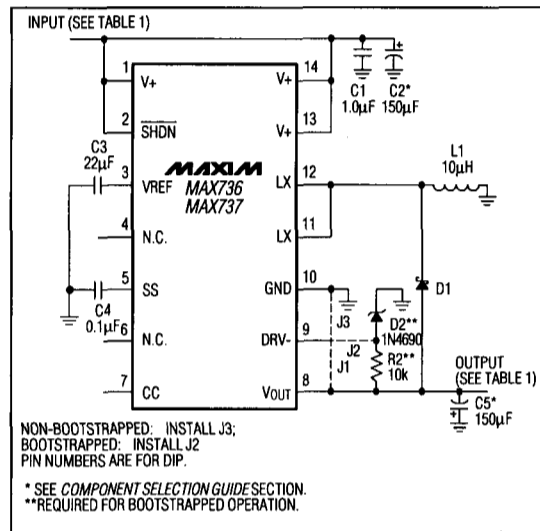


Figure 1a. MAX736/MAX737 Standard Application Circuit (Through-Hole Components)

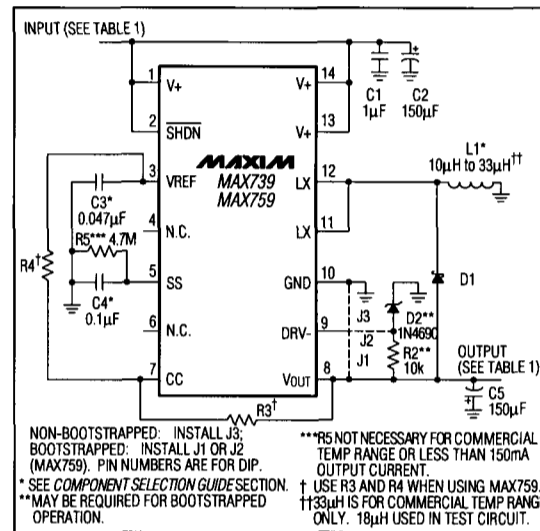


Figure 1b. MAX739/MAX759 Standard Application Circuit (Through-Hole Components)

Table 1. Standard Application Test Circuit Parameters

| Device        | V+ Range (V) |                  | Output Voltage (V) | Diode D1      |
|---------------|--------------|------------------|--------------------|---------------|
|               | Bootstrapped | Non-Bootstrapped |                    |               |
| MAX736        | 4 to 8.6     | 4 to 8.6         | -12                | 1N5818        |
| MAX737        | 4 to 5.5     | 4 to 5.5         | -15                | 1N5818        |
| MAX739/MAX759 | 4 to 11      | 4 to 15          | -5                 | 1N5817/1N5818 |

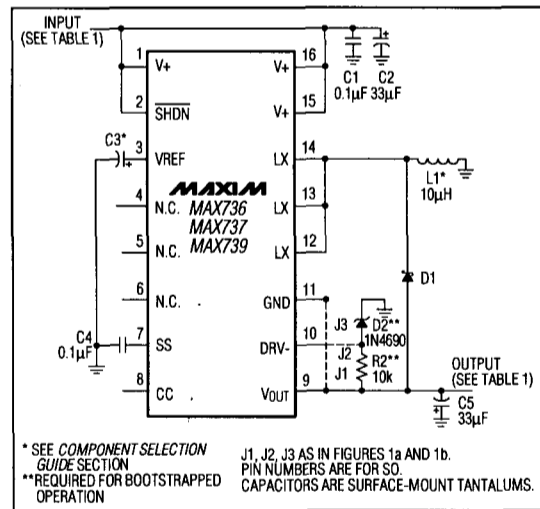


Figure 2. Standard Application Circuit (Surface-Mount Components)

### Detailed Description

#### Operating Principle

The MAX736/MAX737/MAX739/MAX759 are monolithic CMOS ICs containing a current-mode PWM controller and a 1.5A P-channel power MOSFET. Current-mode control provides excellent line-transient response and AC stability. The switch transistor is a current-sensing MOSFET that splits off a fraction of the total source current for current-limit detection.

#### Basic Application Circuits

Figures 1a and 1b show the standard application circuits, using through-hole components, for the MAX736/MAX737 and the MAX739/MAX759 respectively. The surface-mount standard application circuit is shown in Figure 2. Refer to the *Component Selection Guide* section for application-specific circuit components.

MAX736/MAX737/MAX739/MAX759

## -5V, -12V, -15V, and Adjustable Inverting Current-Mode PWM Regulators

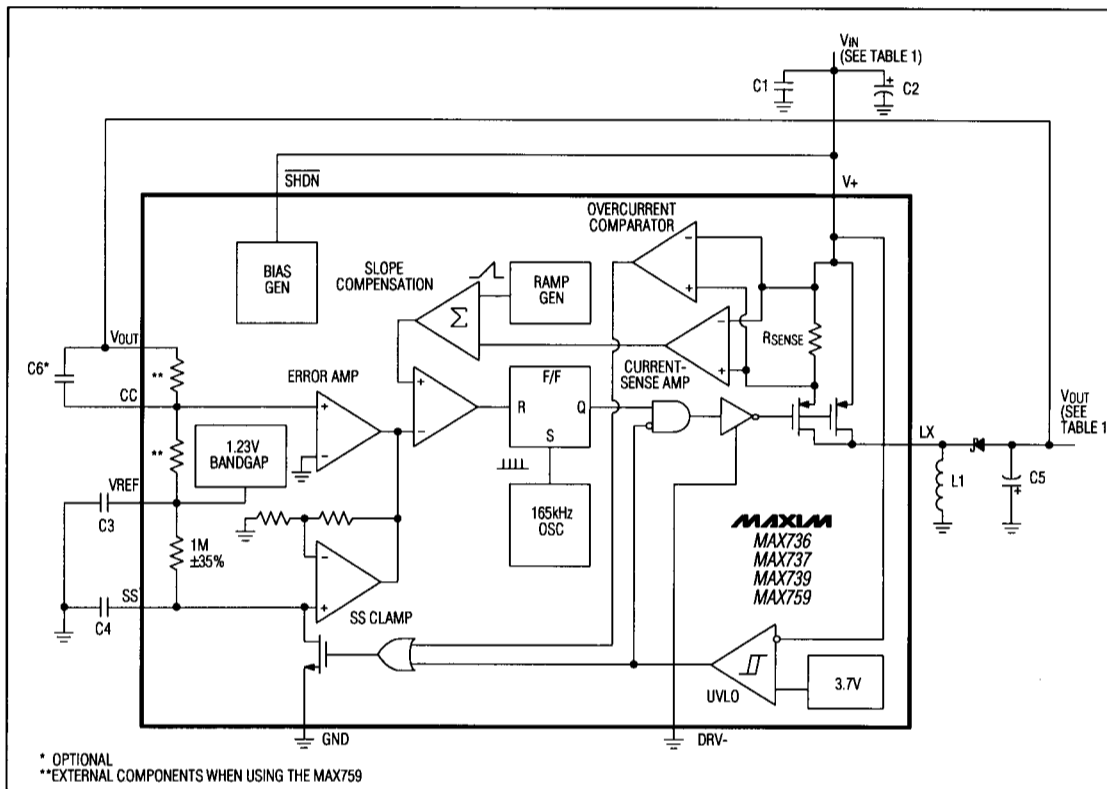


Figure 3. Detailed Block Diagram

### Bootstrapped/Non-Bootstrapped Modes

The most important decision in configuring a MAX736/MAX737/MAX739/MAX759 circuit is whether to operate in bootstrapped (DRV- connected to a negative voltage) or non-bootstrapped (DRV- connected to GND) mode. The DRV- connection determines the input voltage range, available output power, and quiescent supply current as described in the *Typical Operating Characteristics* and *Electrical Characteristics*. DRV- connects to the negative supply rail of the driver stage that drives the internal power MOSFET gate. Increasing the negative voltage applied to DRV- reduces MOSFET on resistance, but the supply current is higher due to the higher gate-source voltage swing. Do not exceed the *Absolute Maximum Ratings* specification for the voltage difference between V+ and DRV- (17V). Intermediate bootstrap voltage levels appropriate for the MAX736/MAX737/MAX759 are obtained by using a zener shunt (Figure 4).

### Continuous-/Discontinuous-Conduction Modes

The maximum duty cycle is 90%, so the circuit can be operated in continuous-conduction mode (CCM) or discontinuous-conduction mode (DCM) by selecting higher or lower inductor values. In CCM, the inductor current never decays to zero. In DCM, the inductor current slope is steep enough so it decays to zero before the end of the transistor off time. CCM allows the MAX736/MAX737/MAX739/MAX759 to deliver maximum load current, and is also slightly less noisy than DCM, because it doesn't exhibit the ringing that occurs when the inductor current reaches zero. However, DCM allows for lower output filter capacitor values because there is no continuous-feedback path through the inductor.



## -5V, -12V, -15V, and Adjustable Inverting Current-Mode PWM Regulators

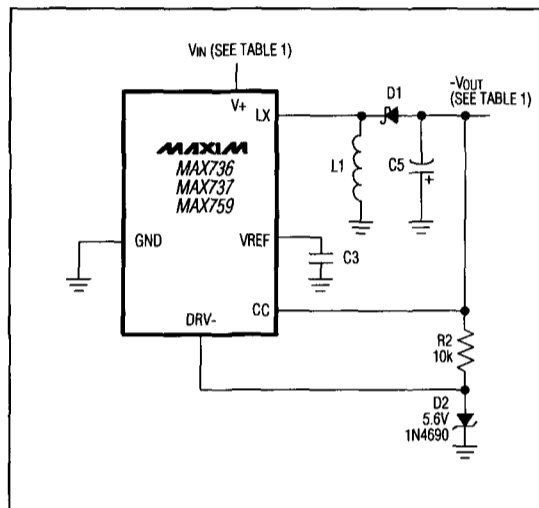


Figure 4. MAX736/MAX737/MAX759 Zener-Bootstrap Scheme

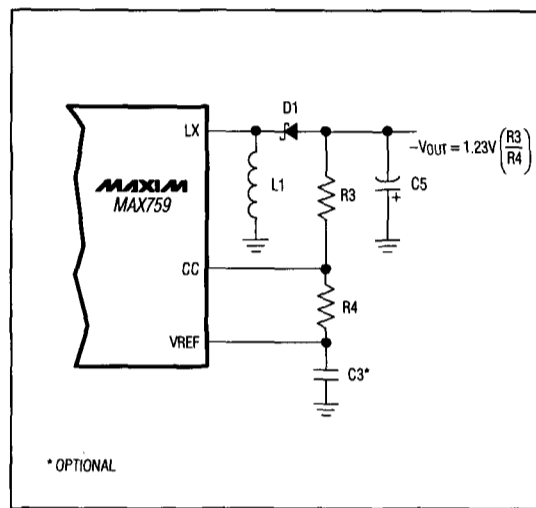


Figure 5. MAX759 Adjustable Output Voltage

MAX736/MAX737/MAX739/MAX759

### AC Compensation

Primary compensation for feedback stability is provided by a dominant pole created by the filter capacitance and load resistance. The ESR of the output filter capacitor introduces a zero in the loop response, which tends to destabilize the loop. In the Standard Application Circuits (Figures 1a and 1b), the 150 $\mu$ F output filter capacitor (C5) should have a maximum ESR over temperature of 0.5 $\Omega$  in order to deliver full load at the minimum supply voltage. Operation at higher input voltages with lower inductor values (low enough to force the circuit to operate in discontinuous-conduction mode) or at lower output current than the full load capability reduces the need for large filter capacitors. Surface-mount capacitors with very low ESR are available. Consequently, smaller capacitance values are adequate (see Figure 2).

### Soft-Start Buffer

The voltage applied to SS determines the peak switch-current limit (see *Typical Operating Characteristics*). A capacitor attached to SS ensures an orderly power-up. SS is pulled up to VREF internally through a 1M $\Omega$  resistor. The maximum current limit can be fixed externally at a lower than normal value by clamping SS to a voltage less than VREF. An SS cycle is initiated whenever either an under-

voltage lockout or overcurrent fault condition triggers an internal transistor to discharge the SS capacitor to ground. Note that the SS capacitor should be at least 10nF. A typical value is 0.1 $\mu$ F. When peak inductor currents at start-up are small, this capacitor may be omitted.

### Undervoltage Lockout

The undervoltage lockout allows operation for supply voltages greater than 3.7V typ (4V guaranteed), with 0.25V of hysteresis. Internal control logic holds the output power MOSFET in an off state until the supply rises above the undervoltage threshold, at which time an SS cycle begins.

### Inductor Selection

Practical nominal inductor values are in the 10 $\mu$ H to 33 $\mu$ H range (see *Component Selection Guide* section). Low inductor values force discontinuous-conduction modes (see the *Continuous-/Discontinuous-Conduction Modes* section). The inductor must have a saturation (incremental) current rating greater than the peak switch current obtained from the Peak Switch Current vs. Load Current graph in the *Typical Operating Characteristics*.

The MAX736/MAX737/MAX739/MAX759 contain slope compensation circuitry that improves current-loop stability. Slope compensation is optimized for inductance values in the 10 $\mu$ H to 33 $\mu$ H range.

## -5V, -12V, -15V, and Adjustable Inverting Current-Mode PWM Regulators

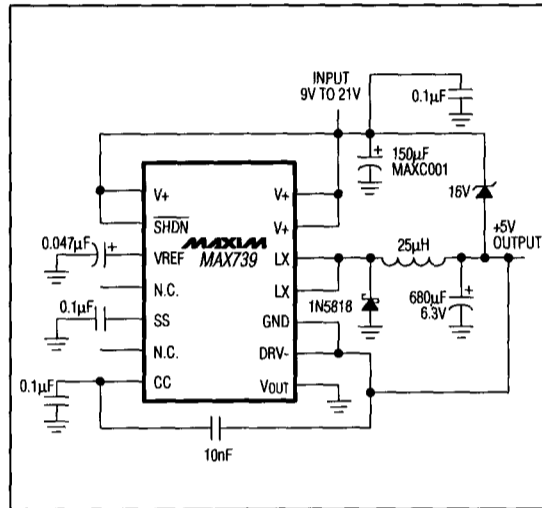


Figure 6. MAX739 +5V Step-Down Application

### Adjustable Output

Adjust the MAX759's output voltage from 0V to -15V by selecting the appropriate external resistor divider (Figure 5). Output voltages beyond -15V require a transformer to protect the power MOSFET from overvoltage. With R4 feedback resistor (5kΩ to 15kΩ), a compensation capacitor (typically 10nF) from the output to CC gives best transient-response characteristics. Be careful to observe the *Absolute Maximum Ratings* on the difference between input voltage and output voltage.

### Reference Bypass Capacitor

When the input voltage exceeds 11V (i.e. MAX739/MAX759 in non-bootstrapped mode) use 0.047µF for reference capacitor C3. In bootstrapped mode, refer to the *Component Selection Guide* section.

With the MAX736/MAX737, use 4.7µF to 22µF for the reference bypass capacitor. 22µF provides the best stability when large output currents are required.

### Printed Circuit Layout and Grounding

Good layout and grounding practices will help achieve low-noise, jitter-free operation. Minimize wiring lengths in the high-current paths, especially the distance between the inductor and the return leads of the filter and bypass capacitors (C2 and C5 of Figures 1 and 2). These high-current ground connections should be brought to a single common point (a "star" ground). Place a low-ESR bypass capacitor directly at the V+ and GND pins of the IC (C1 in Figures 1 and 2).

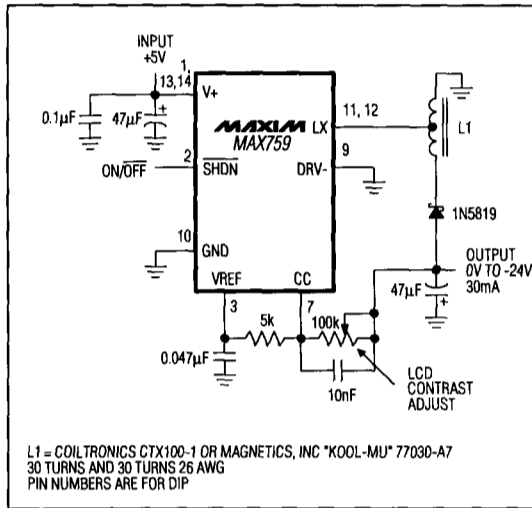


Figure 7. -24V LCD Power Supply

L1 = COILTRONICS CTX100-1 OR MAGNETICS, INC "KOOL-MU" 77030-A7  
30 TURNS AND 30 TURNS 26 AWG  
PIN NUMBERS ARE FOR DIP

Refer to the MAX739 evaluation kit manual for the recommended layout.

### Component Selection Guide

The following guidelines are for component selection when the MAX736/MAX737/MAX739/MAX759 are operated in bootstrapped mode (i.e. DRV- connected to -5.6V (MAX736/MAX737) and DRV- connected to VOUT (MAX739/MAX759)). For non-bootstrapped applications see *Reference Bypass* section.

### Surface-Mount Component Selection (see Figure 2) MAX739/MAX759

Over the extended temperature range, use the following component values: L1 = 10µH, C1 = 0.1µF, C2 = 33µF, C3 = 3.3µF (tantalum), C4 = 0.1µF, C5 = 33µF. When  $V_{IN} \geq 4.5V$ , this circuit provides 200mA ( $V_{OUT} = -5V$ ). Over the commercial temperature range, reference capacitor C3 is not required for load currents less than 150mA.

### MAX736/MAX737

Over both the commercial and extended temperature ranges, use the following component values: L1 = 10µH, C1 = 0.1µF, C2 = 33µF (16V), C3 = 22µF (20V), C4 = 0.1µF, C5 = 33µF (20V). C2 and C5 must be low-ESR capacitors such as those available from Matsuo and Sprague. When  $V_{IN} \geq 4.5V$ , this circuit provides 100mA. When  $V+$  is  $\geq 6V$ , the MAX736 provides up to 125mA of output current (note that 6V exceeds the input voltage range of the MAX737).

## -5V, -12V, -15V, and Adjustable Inverting Current-Mode PWM Regulators

**Table 2. Component Suppliers**

| PRODUCTION METHOD      | INDUCTORS   | CAPACITORS  |
|------------------------|---|---|
| Surface Mount          | Sumida<br>USA: Phone (708) 956-0666<br><br>Japan: Phone (03) 3607-5111<br>FAX (03) 3607-5428<br>CD54-330 (33μH)<br>CD54-100 (10μH)<br><br>Coiltronics<br>Phone (305) 781-8900<br>FAX (305) 782-4163<br>CTX 100 series | Matsuo<br>USA: Phone (714) 969-2491<br>FAX (714) 960-6492<br><br>Japan: Phone (06) 332-0871<br>267 series<br><br>Sprague Electric Company<br>USA: Phone (603) 224-1961<br>FAX (603) 224-1430<br>595D Series |
| Miniature Through-Hole | Sumida<br>USA: Phone (708) 956-0666<br><br>Japan: Phone (03) 3607-5111<br>FAX (03) 3607-5428<br>RCH654-330 (33μH)<br>RCH108-330 (33μH)  | Sanyo Os-Con<br>USA: Phone (619) 661-6322<br><br>Japan: Phone (0720) 70-1005<br>FAX (0720) 70-1174<br>OS-CON series<br>Low ESR Organic Semiconductor  |
| Through-Hole           | Renco<br>Phone (516) 586-5566<br>FAX (516) 586-5562<br>RL 1284-33 (33μH)  | Nichicon<br>Phone (708) 843-7500<br>FAX (708) 843-2798<br>PL series<br>Low ESR Electrolytics<br><br>United Chemi-Con<br>Phone (708) 696-2000<br>FAX (708) 640-6311<br>LXF series                            |

For wide temperature applications using through-hole components, organic semiconductor capacitors are recommended (C2 and C5 in Figure 1). These capacitors maintain low ESR across their operating temperature range.

### Through-Hole Extended Temperature Range Component Selection (see Figure 1)

#### MAX739/MAX759

Use the following component values: L1 = 18μH, C1 = 1μF, C2 = 150μF (OS-CON), C3 = 22μF (tantalum), C4 = 1.0μF, C5 = 220μF (OS-CON), R5 = 4.7MΩ. This circuit provides up to 250mA (V<sub>OUT</sub> = -5V) when V<sub>IN</sub> ≥ 4.5V, and up to 300mA when V<sub>IN</sub> ≥ 6V. Note that this is the only configuration that uses resistor R5. For output currents up to 150mA, C4 can be reduced to 0.1μF and R5 can be omitted.

#### MAX736/MAX737

Use the following component values: L1 = 10μH, C1 = 1.0μF, C2 = 220μF (OS-CON), C3 = 22μF (tantalum), C4 = 0.1μF, C5 = 100μF (OS-CON). When V<sub>IN</sub> ≥ 4.5V, the circuit provides 100mA. When V<sub>+</sub> is ≥ 6V, the MAX736 provides up to 125mA of output current.

### Through-Hole Commercial Temperature Range Component Selection (see Figure 1)

#### MAX739/MAX759

Use the following component values: L1 = 10μH to 33μH, C1 = 1μF, C2 & C5 = 150μF (35V, Nichicon), C3 = 0μF to 2.2μF, C4 = 0.1μF.

With L1 = 10μH and C3 omitted, when V<sub>IN</sub> ≥ 4.5V, the circuit provides up to 200mA. When V<sub>IN</sub> ≥ 6V, the circuit provides up to 250mA.

When L1 = 15μH to 33μH, C3 = 2.2μF, and V<sub>IN</sub> ≥ 4.5V, the circuit provides 250mA. When V<sub>IN</sub> is ≥ 6V, the circuit provides up to 300mA. If C3 is not used, the output current capability is reduced by approximately 50mA.

#### MAX736/MAX737

Use the following component values: L1 = 10μH, C1 = 1.0μF, C2 & C5 = 150μF (35V, Nichicon), C3 = 22μF, C4 = 0.1μF. When V<sub>IN</sub> ≥ 4.5V, the circuit provides 100mA. When V<sub>+</sub> is ≥ 6V, the MAX736 provides up to 125mA of output current.

**MAX736/MAX737/MAX739/MAX759**

## -5V, -12V, -15V, and Adjustable Inverting Current-Mode PWM Regulators

### Applications Information

#### +5V Step-Down Application

The MAX739/MAX759 can operate as step-down (buck) regulators with a positive output (Figure 6). Because the supply current flows into the load, this +5V step-down circuit offers good efficiency even at low load currents: 60% to 85% from 3mA, up to the full-load capability of 1A. It requires a minimum load of 3mA. The input voltage range is 9V to 21V. If the input does not exceed 15V, ground DRV- for higher efficiency and remove the zener.

#### -24V LCD Power Supply

The LCD power supply circuit of Figure 7 generates an adjustable negative voltage for powering small LCD displays, and will deliver 30mA at -24V. Typical efficiency at 30mA is 80%. A simple autotransformer safely steps up the output voltage beyond the voltage breakdown rating of the internal power MOSFET. The autotransformer (tapped inductor) specified on the schematic is a miniature (0.25" diameter) toroid. This autotransformer approach is slightly better than a flyback transformer due to superior magnetic coupling and a reduction in the number of turns. Refer to the MAX759LCKIT-SO power supply evaluation kit manual and Application Note.

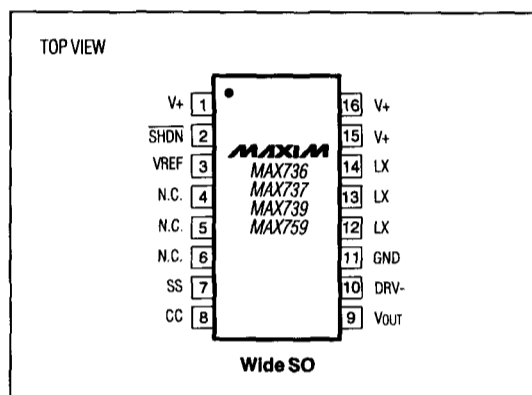
### Ordering Information (continued)

| PART      | TEMP. RANGE     | PIN-PACKAGE    |
|-----------|-----------------|----------------|
| MAX739CPD | 0°C to +70°C    | 14 Plastic DIP |
| MAX739CWE | 0°C to +70°C    | 16 Wide SO     |
| MAX739C/D | 0°C to +70°C    | Dice*          |
| MAX739EPD | -40°C to +85°C  | 14 Plastic DIP |
| MAX739EWE | -40°C to +85°C  | 16 Wide SO     |
| MAX739MJD | -55°C to +125°C | 14 CERDIP**    |
| MAX759CPD | 0°C to +70°C    | 14 Plastic DIP |
| MAX759CWE | 0°C to +70°C    | 16 Wide SO     |
| MAX759C/D | 0°C to +70°C    | Dice*          |
| MAX759EPD | -40°C to +85°C  | 14 Plastic DIP |
| MAX759EWE | -40°C to +85°C  | 16 Wide SO     |
| MAX759MJD | -55°C to +125°C | 14 CERDIP**    |

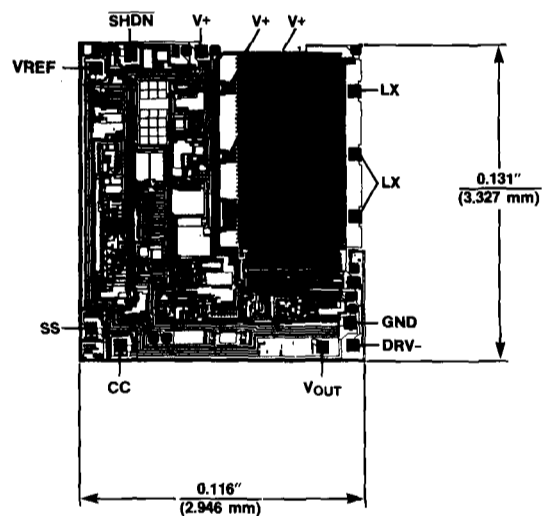
\*Contact factory for dice specifications.

\*\*Contact factory for availability and processing to MIL-STD-883.

### Pin Configurations (continued)



### Chip Topography



NOTE: TRANSISTOR COUNT: 274;  
CONNECT SUBSTRATE TO V+.