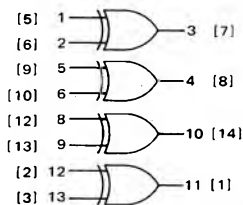


QUAD EXCLUSIVE "OR" GATE

MC8200/MC7200 series

**MC8241F, L\***  
**MC7241F, L, P\***

ADVANCE INFORMATION/NEW PRODUCT



$$3 = 1 \cdot \bar{2} + \bar{1} \cdot 2$$

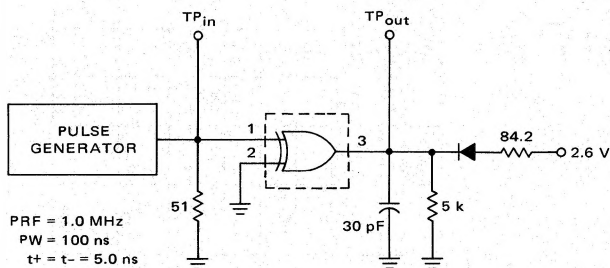
$V_{CC} = \text{Pin } 14$  [4]  
 $GND = \text{Pin } 7$  [11]

Numbers at ends of terminals represent pin numbers for devices in the dual in-line package.  
Numbers in brackets represent pin numbers for devices in the flat package.

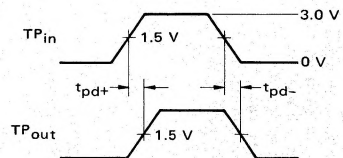
This device contains two independent gating structures to perform the Exclusive OR function on two input variables. The output employs the totem-pole structure.

Input Loading Factor = 2  
Output Loading Factor = 10  
Total Power Dissipation = 225 mW typ/pkg

SWITCHING TIME TEST CIRCUIT AND WAVEFORMS



PRF = 1.0 MHz  
PW = 100 ns  
 $t_r = t_f = 5.0$  ns



5 kΩ and 30 pF include jig and scope.

\*F suffix = TO-86 ceramic flat package (Case 607).  
L suffix = TO-116 ceramic dual in-line package (Case 632).  
P suffix = TO-116 plastic dual in-line package (Case 605).

