

# MDC3205



ON Semiconductor®

<http://onsemi.com>

## Advance Information Integrated Relay/Solenoid Driver

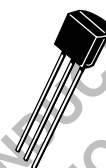
- Optimized to Switch 3 V to 5 V Relays from a 5 V Rail
- Compatible with “TX” and “TQ” Series Telecom Relays Rated up to 625 mW at 3 V to 5 V
- Features Low Input Drive Current
- Internal Zener Clamp Routes Induced Current to Ground Rather Than Back to Supply
- Guaranteed Off State with No Input Connection
- Supports Large Systems with Minimal Off-State Leakage
- ESD Resistant in Accordance with the 2000 V Human Body Model
- Provides a Robust Driver Interface Between Relay Coil and Sensitive Logic Circuits

### Applications include:

- Telecom Line Cards and Telephony
- Industrial Controls
- Security Systems
- Appliances and White Goods
- Automated Test Equipment
- Automotive Controls

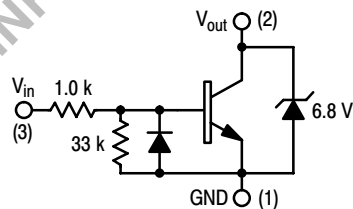
This device is intended to replace an array of three to six discrete components with an integrated part. It can be used to switch other 3 to 5 Vdc Inductive Loads such as solenoids and small DC motors.

### RELAY/SOLENOID DRIVER SILICON MONOLITHIC CIRCUIT BLOCK



CASE 29-11, STYLE 14  
TO-92

### INTERNAL CIRCUIT DIAGRAM



### MAXIMUM RATINGS

Rating	Symbol	Value	Unit
Power Supply Voltage	$V_{CC}$	6.0	Vdc
Recommended Operating Supply Voltage	$V_{CC}$	2.0–5.5	Vdc
Input Voltage	$V_{in(fwd)}$	6.0	Vdc
Reverse Input Voltage	$V_{in(rev)}$	–0.5	Vdc
Output Sink Current — [Continuous]	$I_o$	300	mA
Junction Temperature	$T_J$	150	°C
Operating Ambient Temperature Range	$T_A$	–40 to +85	°C
Storage Temperature Range	$T_{stg}$	–65 to +150	°C

### THERMAL CHARACTERISTICS

Characteristic	Symbol	Max	Unit
Total Device Dissipation <sup>(1)</sup> Derate above 25°C	$P_D$	625	mW
Thermal Resistance Junction to Ambient	$R_{\theta JA}$	200	°C/W

1. FR-5 PCB of 1" x 0.75" x 0.062",  $T_A = 25^\circ\text{C}$

This document contains information on a new product. Specifications and information herein are subject to change without notice.

# MDC3205

## ELECTRICAL CHARACTERISTICS ( $T_A = 25^\circ\text{C}$ unless otherwise noted)

Characteristic	Symbol	Min	Typ	Max	Unit
<b>OFF CHARACTERISTICS</b>					
Output Zener Breakdown Voltage (@ $I_T = 10\text{ mA}$ Pulse)	$V_{(BRout)}$ $V_{(-BRout)}$	6.4 —	6.8 -0.7	7.2 —	V
Output Leakage Current @ 0 Input Voltage ( $V_{out} = 5.5\text{ Vdc}$ , $V_{in} = \text{O.C.}$ , $T_A = 25^\circ\text{C}$ ) ( $V_{out} = 5.5\text{ Vdc}$ , $V_{in} = \text{O.C.}$ , $T_A = 85^\circ\text{C}$ )	$I_{OO}$	— —	— —	5.0 30	$\mu\text{A}$

## ON CHARACTERISTICS

Input Bias Current @ $V_{in} = 4.0\text{ Vdc}$ ( $I_O = 250\text{ mA}$ , $V_{out} = 0.4\text{ Vdc}$ , $T_A = -40^\circ\text{C}$ ) (correlated to a measurement @ $25^\circ\text{C}$ )	$I_{in}$	—	2.5	—	$\text{mAdc}$
Output Saturation Voltage ( $I_O = 250\text{ mA}$ , $V_{in} = 4.0\text{ Vdc}$ , $T_A = -40^\circ\text{C}$ ) (correlated to a measurement @ $25^\circ\text{C}$ )		—	0.2	0.4	Vdc
Output Sink Current — Continuous ( $T_A = -40^\circ\text{C}$ , $V_{CE} = 0.4\text{ Vdc}$ , $V_{in} = 4.0\text{ Vdc}$ ) (correlated to a measurement @ $25^\circ\text{C}$ )	$I_{C(on)}$	250	—	—	$\text{mA}$

## TYPICAL APPLICATION-DEPENDENT SWITCHING PERFORMANCE

### SWITCHING CHARACTERISTICS

Characteristic	Symbol	$V_{CC}$	Min	Typ	Max	Units
Propagation Delay Times:						ns
High to Low Propagation Delay; Figures 1, 2 (5.0 V 74HC04)	$t_{PHL}$	5.5	—	55	—	
Low to High Propagation Delay; Figures 1, 2 (5.0 V 74HC04)	$t_{PLH}$	5.5	—	430	—	
High to Low Propagation Delay; Figures 1, 3 (3.0 V 74HC04)	$t_{PHL}$	5.5	—	85	—	
Low to High Propagation Delay; Figures 1, 3 (3.0 V 74HC04)	$t_{PLH}$	5.5	—	315	—	
High to Low Propagation Delay; Figures 1, 4 (5.0 V 74LS04)	$t_{PHL}$	5.5	—	55	—	
Low to High Propagation Delay; Figures 1, 4 (5.0 V 74LS04)	$t_{PLH}$	5.5	—	2385	—	
Transition Times:						ns
Fall Time; Figures 1, 2 (5.0 V 74HC04)	$t_f$	5.5	—	45	—	
Rise Time; Figures 1, 2 (5.0 V 74HC04)	$t_r$	5.5	—	160	—	
Fall Time; Figures 1, 3 (3.0 V 74HC04)	$t_f$	5.5	—	70	—	
Rise Time; Figures 1, 3 (3.0 V 74HC04)	$t_r$	5.5	—	195	—	
Fall Time; Figures 1, 4 (5.0 V 74LS04)	$t_f$	5.5	—	45	—	
Rise Time; Figures 1, 4 (5.0 V 74LS04)	$t_r$	5.5	—	2400	—	
Input Slew Rate <sup>(1)</sup>	$\Delta V/\Delta t_{in}$	5.5	TBD	—	—	V/ms

1. Minimum input slew rate must be followed to avoid overdissipating the device.

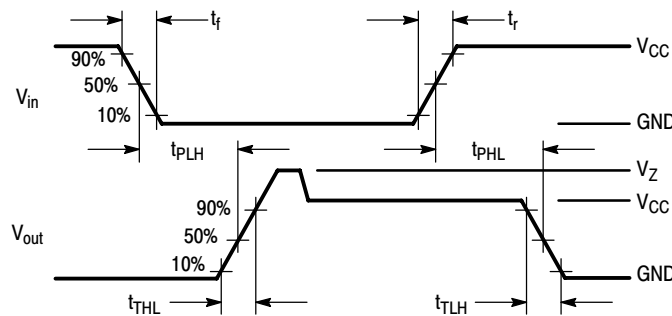
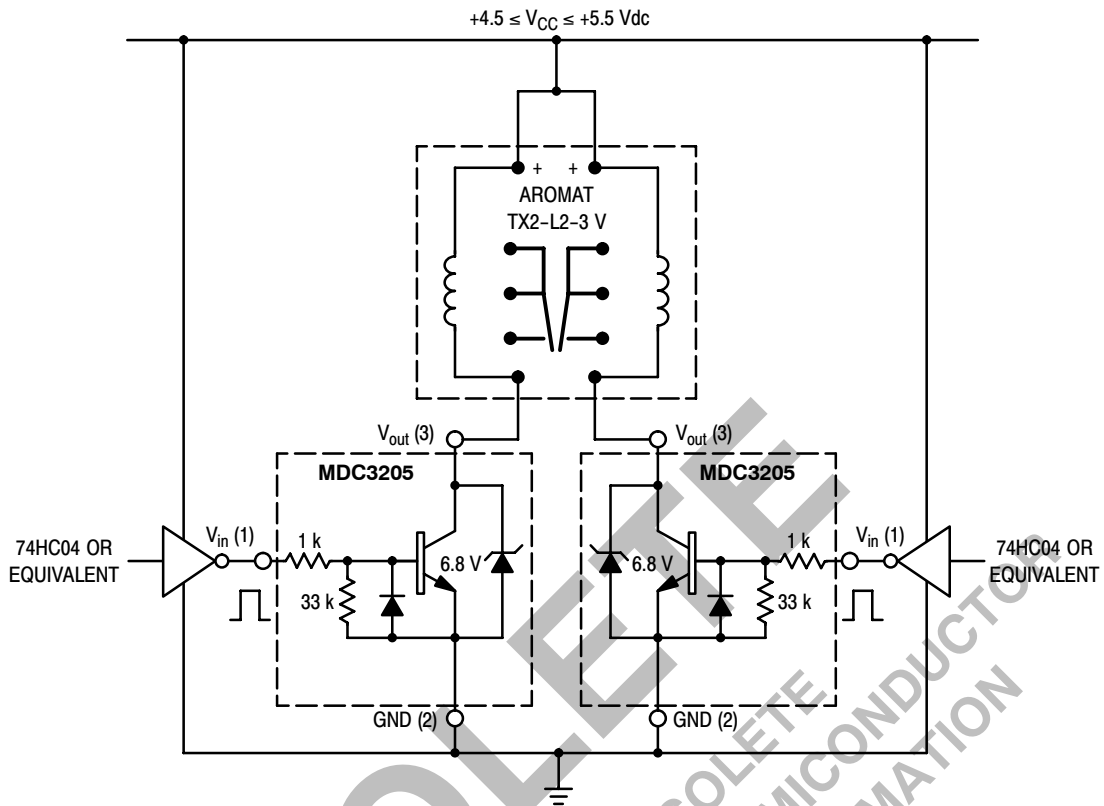
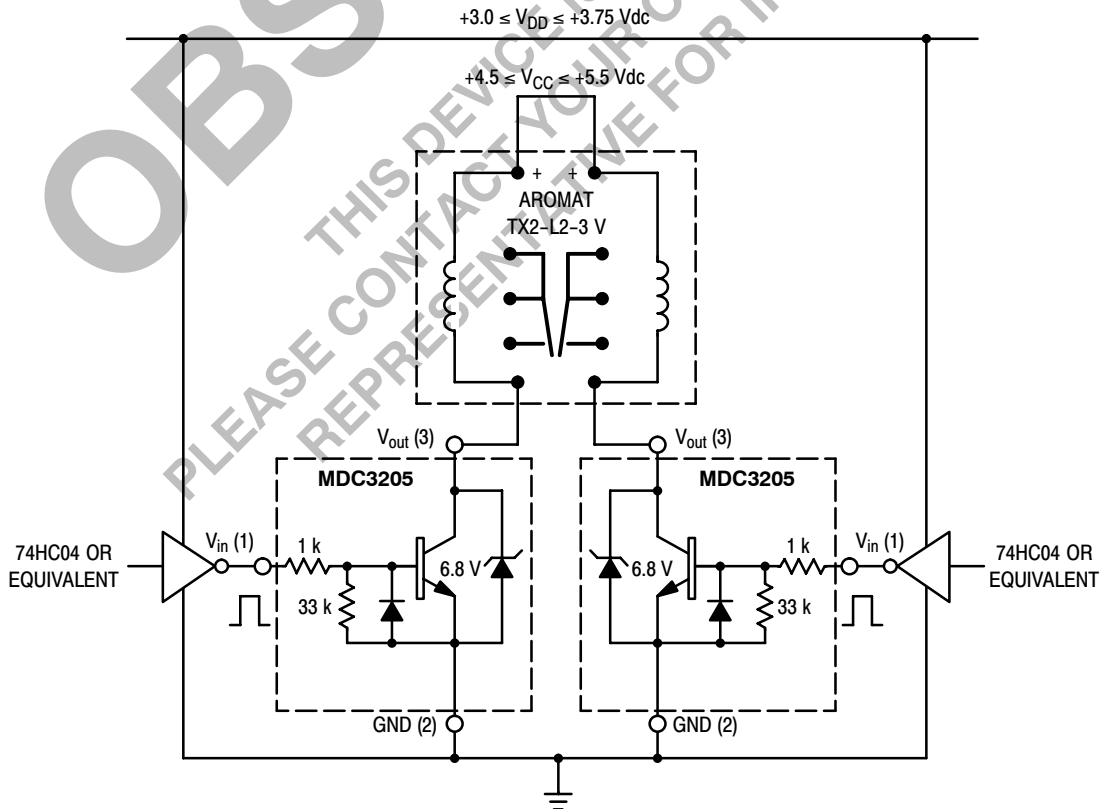


Figure 1. Switching Waveforms

# MDC3205



**Figure 2. A 3.0-V, 200-mW Dual Coil Latching Relay Application with 5.0 V-HCMOS Interface**



**Figure 3. A 3.0-V, 200-mW Dual Coil Latching Relay Application with 3.0 V-HCMOS Interface**

# MDC3205

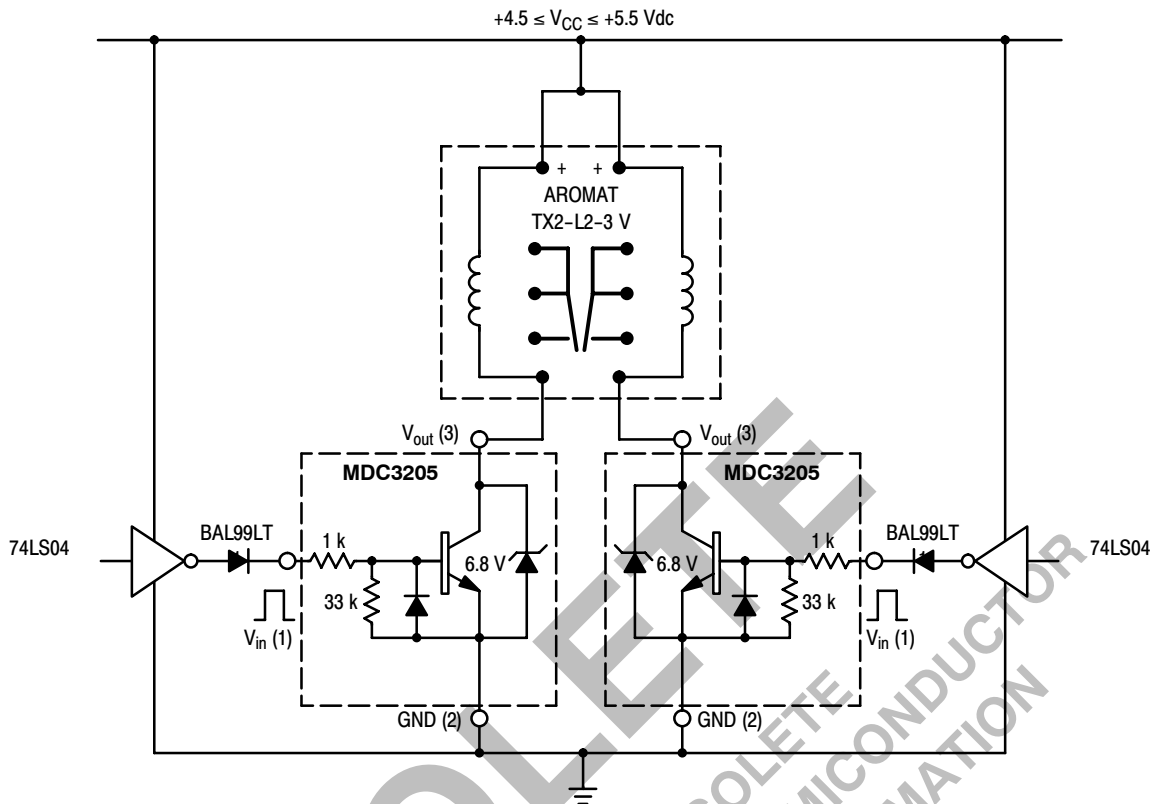


Figure 4. A 3.0-V, 200-mW Dual Coil Latching Relay Application with TTL Interface

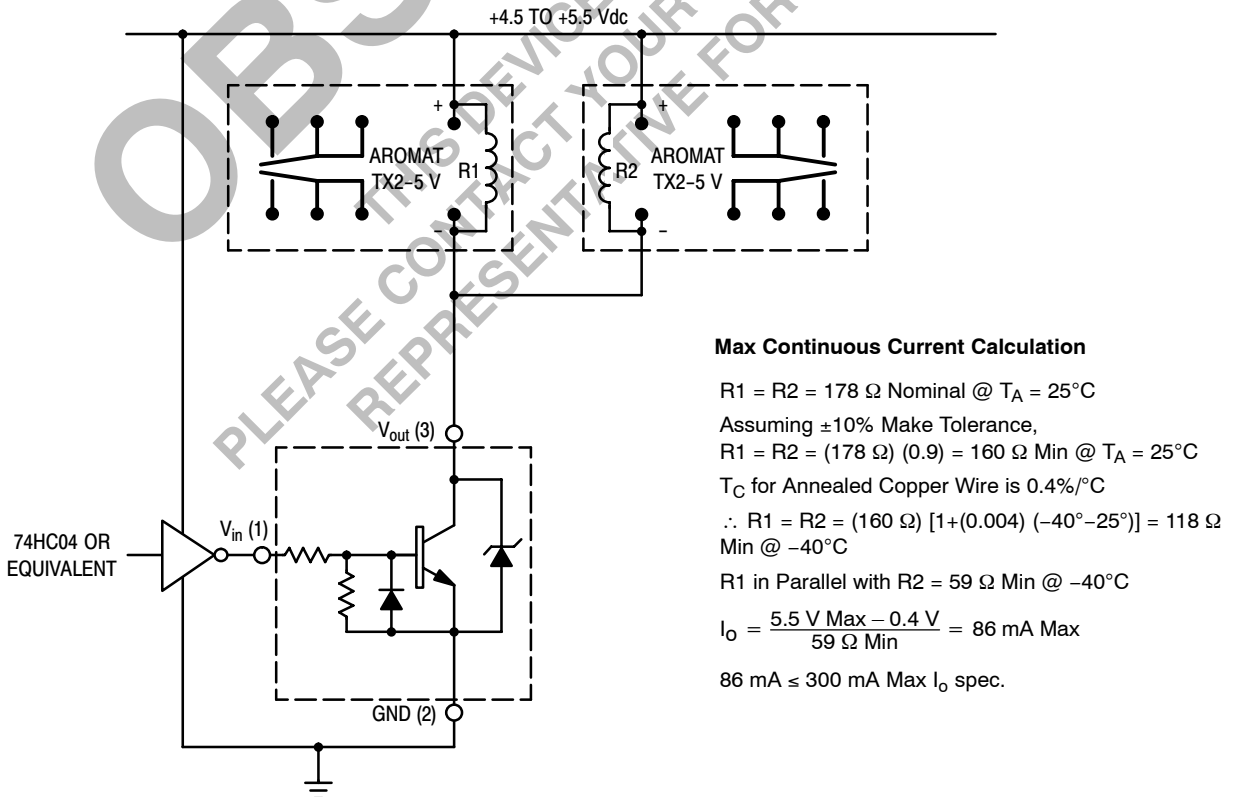


Figure 5. Typical 5.0 V, 140 mW Coil Dual Relay Application

TYPICAL OPERATING WAVEFORMS

(Circuit of Figure 5)

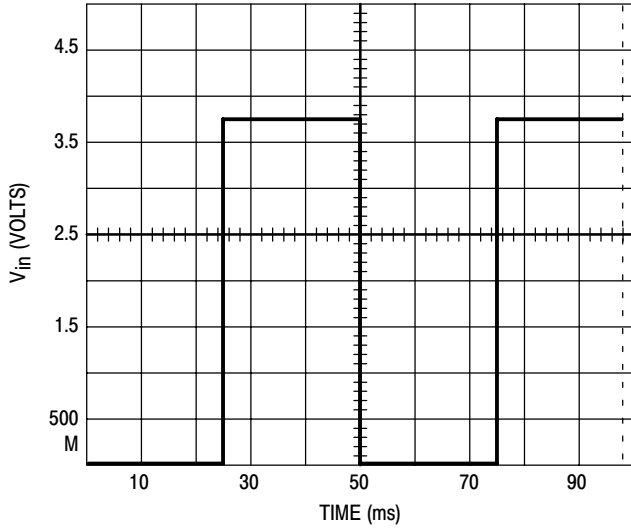


Figure 6. 20 Hz Square Wave Input

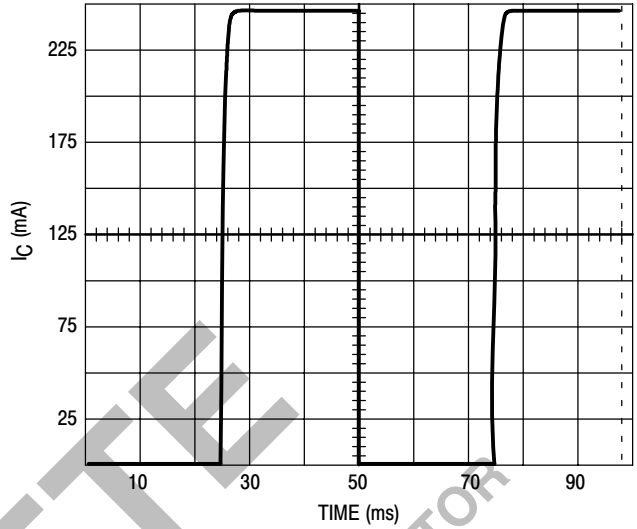


Figure 7. 20 Hz Square Wave Response

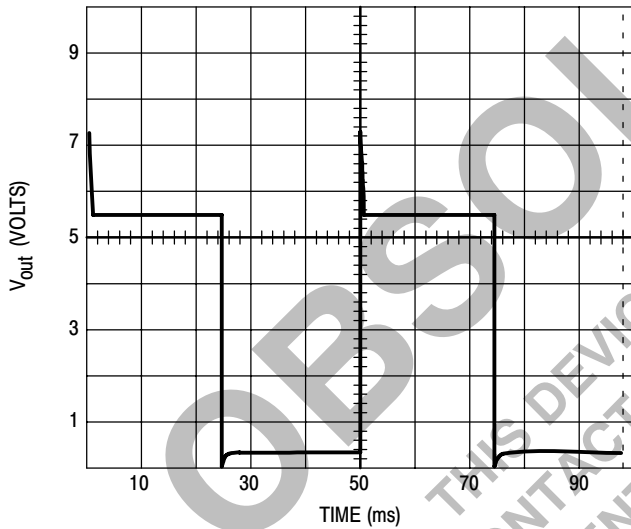


Figure 8. 20 Hz Square Wave Response

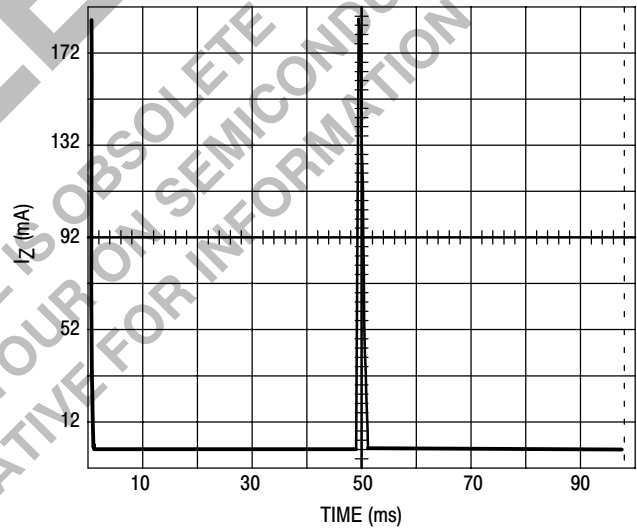


Figure 9. 20 Hz Square Wave Response

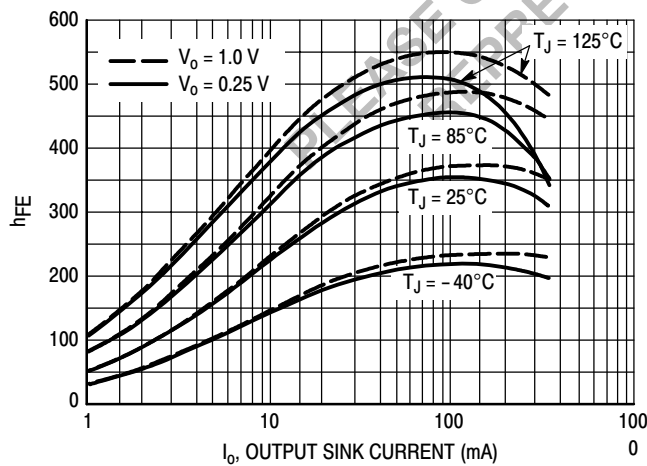


Figure 10. Pulsed Current Gain

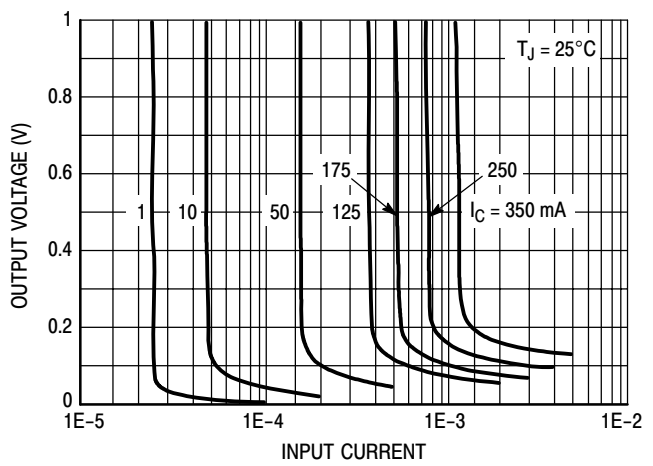
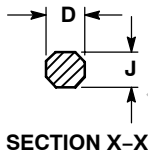
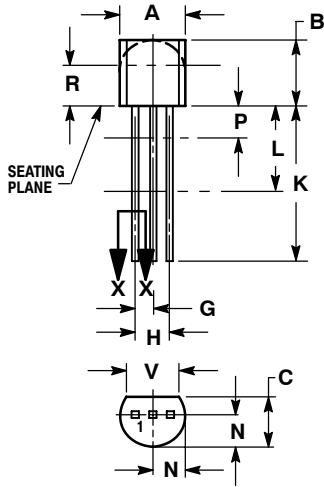


Figure 11. Collector Saturation Region

# MDC3205

## PACKAGE DIMENSIONS

TO-92 (TO-226)  
CASE 29-11  
ISSUE AL



STYLE 14:  
PIN 1. EMITTER  
2. COLLECTOR  
3. BASE

NOTES:

1. DIMENSIONING AND TOLERANCING PER ANSI Y14.5M, 1982.
2. CONTROLLING DIMENSION: INCH.
3. CONTOUR OF PACKAGE BEYOND DIMENSION R IS UNCONTROLLED.
4. LEAD DIMENSION IS UNCONTROLLED IN P AND BEYOND DIMENSION K MINIMUM.

DIM	INCHES		MILLIMETERS	
	MIN	MAX	MIN	MAX
A	0.175	0.205	4.45	5.20
B	0.170	0.210	4.32	5.33
C	0.125	0.165	3.18	4.19
D	0.016	0.021	0.407	0.533
G	0.045	0.055	1.15	1.39
H	0.095	0.105	2.42	2.66
J	0.015	0.020	0.39	0.50
K	0.500	---	12.70	---
L	0.250	---	6.35	---
N	0.080	0.105	2.04	2.66
P	---	0.100	---	2.54
R	0.115	---	2.93	---
V	0.135	---	3.43	---

**ON Semiconductor** and **ON** are registered trademarks of Semiconductor Components Industries, LLC (SCILLC). SCILLC reserves the right to make changes without further notice to any products herein. SCILLC makes no warranty, representation or guarantee regarding the suitability of its products for any particular purpose, nor does SCILLC assume any liability arising out of the application or use of any product or circuit, and specifically disclaims any and all liability, including without limitation special, consequential or incidental damages. "Typical" parameters which may be provided in SCILLC data sheets and/or specifications can and do vary in different applications and actual performance may vary over time. All operating parameters, including "Typicals" must be validated for each customer application by customer's technical experts. SCILLC does not convey any license under its patent rights nor the rights of others. SCILLC products are not designed, intended, or authorized for use as components in systems intended for surgical implant into the body, or other applications intended to support or sustain life, or for any other application in which the failure of the SCILLC product could create a situation where personal injury or death may occur. Should Buyer purchase or use SCILLC products for any such unintended or unauthorized application, Buyer shall indemnify and hold SCILLC and its officers, employees, subsidiaries, affiliates, and distributors harmless against all claims, costs, damages, and expenses, and reasonable attorney fees arising out of, directly or indirectly, any claim of personal injury or death associated with such unintended or unauthorized use, even if such claim alleges that SCILLC was negligent regarding the design or manufacture of the part. SCILLC is an Equal Opportunity/Affirmative Action Employer. This literature is subject to all applicable copyright laws and is not for resale in any manner.

### PUBLICATION ORDERING INFORMATION

**LITERATURE FULFILLMENT:**  
Literature Distribution Center for ON Semiconductor  
P.O. Box 5163, Denver, Colorado 80217 USA  
**Phone:** 303-675-2175 or 800-344-3860 Toll Free USA/Canada  
**Fax:** 303-675-2176 or 800-344-3867 Toll Free USA/Canada  
**Email:** orderlit@onsemi.com

**N. American Technical Support:** 800-282-9855 Toll Free  
USA/Canada  
**Europe, Middle East and Africa Technical Support:**  
Phone: 421 33 790 2910  
**Japan Customer Focus Center**  
Phone: 81-3-5773-3850

**ON Semiconductor Website:** [www.onsemi.com](http://www.onsemi.com)  
**Order Literature:** <http://www.onsemi.com/orderlit>

For additional information, please contact your local Sales Representative