

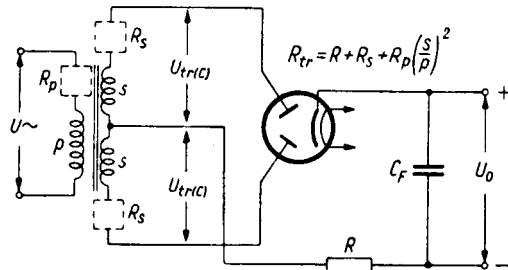
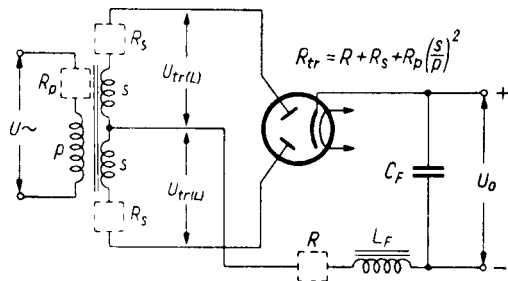


T.			$U_f$	$I_f$	$U_{tr}$	$U_p$	$I_o$	$I_p$	$R_{tr}$	$C_F$	$U_{f/k}$
			V	A	V	V	mA	mA	$\Omega$	$\mu F$	V
EZ 4	eur	1	6,3	0,9	{ 400 300	1120	175		300	16	
EZ 12	eur	2	6,3	0,9			175		200	32	
EZ 81	eur	3	6,3	1	{ 400 500	1000	125		300	32	550
							100		300	32	
							150		160	50	
PVC 6	Tu	4	6,3	0,9	{ 250 300 350	450	150	450	240	50	500
U 81	MOG	5	6,3	1,6	400	1120	175				
U 709	Marc	3	6,3	0,95	500	1400	150	450			
6 AX 5-GT	amer	6	6,3	1,2	350	1000	150	450	270	8	450
345 A	WE	7	6,3	1	350	1375	110	330	50	10	450
351 A	WE	6	6,3	1							



**Equivalents**

EZ 4 N	Dar = EZ 4	UU 12	Maz = U 709	6 CA 4	amer = EZ 81	6 R 4	Ult = EZ 4
PVC 6 S	Tu = EZ 4	VEZ 4	Vat = EZ 4	6 GG 6	TKD = EZ 12	6 Z 40	Tes = EZ 81

