
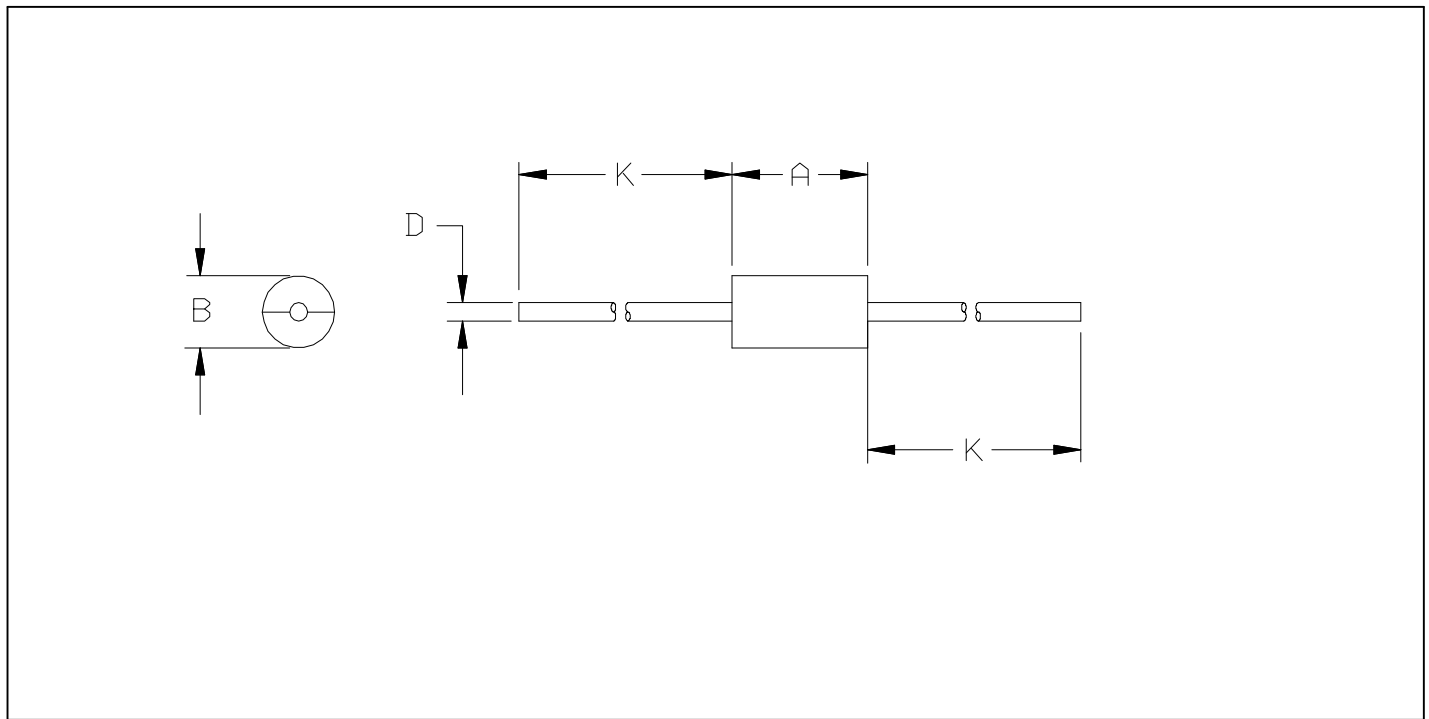


ON Semiconductor 	MECHANICAL OUTLINES DICTIONARY	98ASB42170B	
		PAGE	267
DO NOT SCALE THIS DWG	ALL APPROVAL SIGNATURES ON FILE IN DOCUMENT CENTRAL	ISSUE G	SHEET 1 OF 3



DIM	MILLIMETERS		INCHES	
	MIN	MAX	MIN	MAX
A	9.40	9.65	0.370	0.380
B	4.83	5.33	0.190	0.210
D	1.22	1.32	0.048	0.052
K	25.40	---	1.000	---

NOTES:

1. DIMENSIONING AND TOLERANCING PER ANSI Y14.5M, 1982.
2. CONTROLLING DIMENSION: INCH.
3. 267-01 AND 267-02 OBSOLETE, NEW STANDARD 267-03.


STYLE 1:

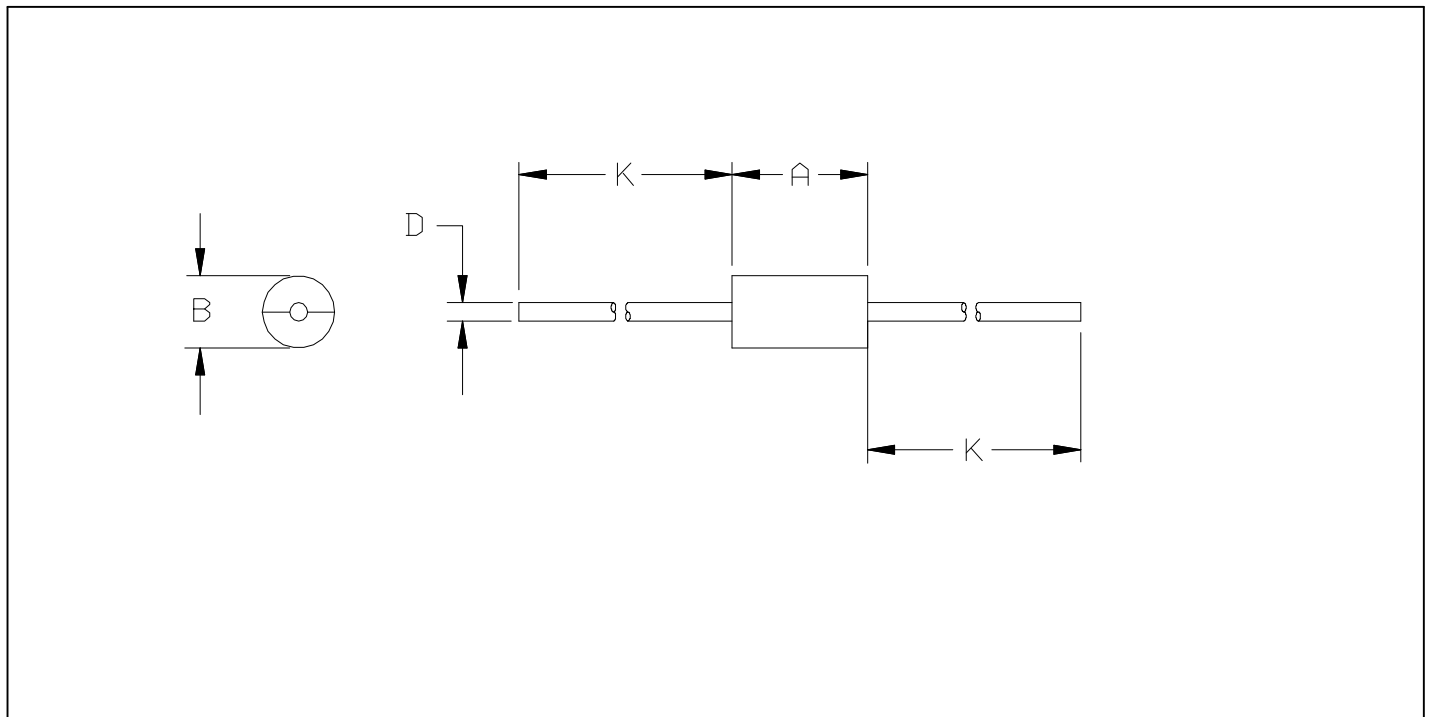
1. CATHODE (POLARITY BAND)
2. ANODE

STYLE 2:

NO POLARITY

CASE NO.	267-03
STATUS	ON SEMICONDUCTOR STANDARD
NEW STD	
USED ON	01ASB18982B(TL)

ON Semiconductor 	MECHANICAL OUTLINES DICTIONARY	98ASB42170B	
		PAGE	267
DO NOT SCALE THIS DWG	ALL APPROVAL SIGNATURES ON FILE IN DOCUMENT CENTRAL	ISSUE G	SHEET 2 OF 3



DIM	MILLIMETERS		INCHES	
	MIN	MAX	MIN	MAX
A	7.30	9.50	0.287	0.374
B	4.80	5.30	0.189	0.209
D	1.20	1.30	0.047	0.051
K	25.40	---	1.000	---

NOTES:

1. DIMENSIONING AND TOLERANCING PER ANSI Y14.5M, 1982.
2. CONTROLLING DIMENSION: INCH.
3. 267-04 OBSOLETE, NEW STD 267-05.

STYLE 1:

1. CATHODE (POLARITY BAND)
2. ANODE

STYLE 2:

NO POLARITY

CASE NO.	267-05
STATUS	ON SEMICONDUCTOR STANDARD
NEW STD	
USED ON	01ASB18982B(TL)

